



**PATRIOT™ P15**

User's Guide  
Windows®

# VISIONEER PATRIOT P15 SCANNER USER GUIDE

## COPYRIGHT INFORMATION

© 2017 Visioneer, Inc. All rights reserved. The Visioneer brand name and OneTouch® logo are registered trademarks of Visioneer, Inc.

Changes are periodically made to this document. Changes, technical inaccuracies, and typographic errors will be corrected in subsequent editions. Information is subject to change without notice and does not represent a commitment on the part of Visioneer.

Document Version: 05-0952-000 (June 2017)

This product is covered by one or more of the following patents: 6,064,778, 6,480,304, 7,715,061, 10/838,364, 7,397,587.WO 02/25571, 7,617,985, 11/140,653, 10/787,912

Reproduction, adaptation, or translation without prior written permission is prohibited, except as allowed under the copyright laws. Copyright protection claimed includes all forms of matters of copyrightable materials and information now allowed by statutory or judicial law or hereinafter granted, including without limitation, material generated from the software programs which are displayed on the screen such as styles, templates, icons, screen displays, looks, etc.

The software described is furnished under a licensing agreement. The software may be used or copied only in accordance with the terms of such an agreement. It is against the law to copy the software on any medium except as specifically allowed in the licensing agreement. No part of this document may be reproduced or transmitted in any form or by any means, electronic or mechanical, including photocopying, recording, or information storage and retrieval systems, or translated to another language, for any purpose other than the licensee's personal use and as specifically allowed in the licensing agreement, without the express written permission of Visioneer.

The PaperPort® brand name and logo are registered trademarks of Nuance Communications, Inc.

ISIS® is a registered trademark of EMC<sup>2</sup> Corporation in the United States and/or other countries.

Adobe®, Adobe® Acrobat®, Adobe® Reader®, and the Adobe® PDF logo are registered trademarks of Adobe Systems Incorporated in the United States and/or other countries.

Post-It® is a registered trademark of 3M in the United States and/or other countries.

ABBYY®, the ABBYY® logo, ABBYY® Business Card Reader® and ABBYY® FineReader® are either registered trademarks or trademarks of ABBYY Software Ltd.

Findo® and the Findo® Logo are either registered trademarks or trademarks of FINDO.

Microsoft is a U.S. registered trademark of Microsoft Corporation. Windows™ is a trademark and SharePoint® is a registered trademark of Microsoft Corporation.

Kensington® is a registered trademark of ACCO Brands Corporation.

ZyINDEX is a registered trademark of ZyLAB International, Inc. ZyINDEX toolkit portions, Copyright © 1990-1998, ZyLAB International, Inc.

All other products mentioned herein may be trademarks of their respective companies and are hereby acknowledged.

## VISIONEER'S LIMITED PRODUCT WARRANTY

Please go to [www.visioneer.com](http://www.visioneer.com), select your product, and then click the "Warranty Program" link to view the warranty terms and conditions for your scanner.

## RESTRICTED RIGHTS LEGEND

Use, duplication, or disclosure is subject to restrictions as set forth in contract subdivision (c)(1)(ii) of the Rights in Technical Data and Computer Software Clause 52.227-FAR14. Material scanned by this product may be protected by governmental laws and other regulations, such as copyright laws. The customer is solely responsible for complying with all such laws and regulations.

## RoHS AND WEEE COMPLIANCE

This product is compliant with RoHS Regulations of the European Parliament and Council Directive on the Restrictions of the Use of Certain Hazardous Substances in Electrical and Electronic Equipment (2002/95/EC), and with the Waste Electrical and Electronic Equipment (WEEE) Directive (2002/96/EC).

## UNITED STATES (FCC REGULATIONS)

This equipment has been tested and found to comply with the limits for a Class B digital device, pursuant to Part 15 of the FCC Rules. These limits are designed to provide reasonable protection against harmful interference in a residential installation. This equipment generates, uses, and can radiate radio frequency energy and, if not installed and used in accordance with the instruction manual, may cause harmful interference to radio communications.

However, there is no guarantee that interference will not occur in a particular installation. If this equipment does cause harmful interference to radio or television reception, which can be determined by turning the equipment off and on, the user is encouraged to try to correct the interference by one or more of the following measures:

- Reorient or relocate the receiving antenna.
- Increase the separation between the equipment and receiver.
- Connect the equipment into an outlet on a circuit different from that to which the receiver is connected.
- Consult the dealer or an experienced radio/TV technician for help.

This device complies with Part 15 of the FCC Rules. Operation is subject to the following two conditions: (1) This device may not cause harmful interference, and (2) this device must accept any interference received, including interference that may cause undesired operation.

Changes and modifications to this equipment not specifically approved by Visioneer may void the user's authority to operate this equipment. Shielded cables must be used with this equipment to maintain compliance with FCC regulations.

## ENERGY STAR FOR THE USA

Energy Program compliance

As an ENERGY STAR® partner, Visioneer Inc. has determined that this product meets the ENERGY STAR guidelines for Imaging Equipment.

ENERGY STAR and the ENERGY STAR mark are registered trademarks owned by the U.S. Environmental Protection Agency. The ENERGY STAR Imaging Equipment Program is a team effort between the U.S., European Union and Japanese governments and the office equipment industry to promote energy-efficient copiers, printers, fax, multifunction machine, personal computers, and monitors. Reducing product energy consumption helps combat smog, acid rain and long-term changes to the climate by decreasing the emissions that result from generating electricity.



## VISUAL DISPLAY

**Warning:** This device is not intended for use in the direct field of view at visual display workplaces. To avoid incommuting reflections at visual display workplaces, this device must not be placed in the direct field of view.

## CLASS 1 LED

This machine is certified as Class 1 LED product. This means that this machine does not produce hazardous laser radiation.

## PRODUCT RECYCLING & DISPOSAL

If you are managing the disposal of your Visioneer® product, please note that the product may contain lead, mercury, Perchlorate, and other materials whose disposal may be regulated due to environmental considerations. The presence of these materials is fully consistent with global regulations applicable at the time that the product was placed on the market. For recycling and disposal information, contact your local authorities. In the United States, you may also refer to the Electronic Industries Alliance web site: <http://www.eiae.org>.

Perchlorate Material - This product may contain one or more Perchlorate-containing devices, such as batteries. Special handling may apply, please see: <http://www.dtsc.ca.gov/hazardouswaste/perchlorate/>.

## SAFETY

### Notices and Safety

Please read the following instructions carefully before operating the machine and refer to them as needed to ensure the continued safe operation of your machine.

Your Visioneer® product and supplies have been designed and tested to meet strict safety requirements. These include safety agency evaluation and certification, and compliance with electromagnetic regulations and established environmental standards.

**WARNING:** The safety and environment testing and performance of this product have been verified using Visioneer® materials only. Unauthorized alterations, which may include the addition of new functions or connection of external devices, may impact the product certification. Please contact your Visioneer representative for more information.

### **Operational Safety Information**

Your Visioneer® equipment and supplies have been designed and tested to meet strict safety requirements. These include safety agency examination, approval, and compliance with established environmental standards.

To ensure the continued safe operation of your Visioneer® equipment, follow these safety guidelines at all times:

#### **Do these:**

- Always follow all warnings and instructions that are marked on or supplied with the equipment.
- Always use materials specifically designated for this product, the use of other materials may result in poor performance and create a hazardous situation. Do not use aerosol cleaners, they may be explosive and flammable under certain conditions.
- Always exercise care when moving or relocating equipment.
- Always locate the machine on a solid support surface that has adequate strength to support the weight of the machine.
- Always locate the machine in an area that has adequate ventilation and room for servicing.

#### **Do not do these:**

- Never attempt any maintenance function that is not specifically described in this documentation.
- Never remove covers or guards that are fastened with screws. There are no operator serviceable areas within these covers.
- Never locate the machine near a radiator or any other heat source.
- Never override or “cheat” any of the electrical or mechanical interlock devices.
- Always unplug this equipment from the electrical outlet before cleaning.

### **Emergency Power Off**

If any of the following conditions occur, turn off the scanner immediately and disconnect the power cable(s) from the electrical outlet(s).

- The equipment emits unusual odors or makes unusual noises.
- The power cable is damaged or frayed.
- A wall panel circuit breaker, fuse, or other safety device has been tripped.
- Liquid is spilled into the machine.
- The machine is exposed to water.
- Any part of the machine is damaged.

### **Maintenance Information**

- Any operator product maintenance procedures will be described in the user documentation supplied with the product.
- Do not carry out any maintenance on this product which is not described in the customer documentation.
- Do not use aerosol cleaners. The use of cleaners that are not approved may cause poor performance of the equipment, and could cause a dangerous condition.
- Use supplies and cleaning materials only as directed in this manual.
- Do not remove covers or guards that are fastened with screws. There are no parts behind these covers that you can maintain or service.
- Do not perform any maintenance procedures unless you have been trained to do them by an authorized local dealer or unless a procedure is specifically described in the user manuals.
- Never place this equipment where people might step on or trip on the power cord.

# TABLE OF CONTENTS

<b>Welcome .....</b>	<b>7</b>
What's in the Box .....	7
System Requirements .....	8
Documentation .....	8
The Visioneer® Patriot P15 Features .....	9
LCD Screen .....	10
 <b>Scanner Setup .....</b>	 <b>13</b>
Connect the Power Cord .....	15
Connect the scanner power to the wall .....	15
Connect the scanner power to the PC .....	16
Safety Lock .....	17
 <b>Installation .....</b>	 <b>19</b>
Install the Software and Connect the Scanner .....	19
Installing the Scanner Driver .....	22
Connect the USB Cable and Turn on the Power .....	23
Installing Visioneer OneTouch .....	25
Installing Additional Applications .....	26
View the User Guides .....	28
Register Your Scanner .....	29
 <b>Loading Documents to Scan .....</b>	 <b>31</b>
Supported Document Types .....	31
Documents to Avoid Scanning .....	32
Unsupported Document Types .....	32
Scanning from the Automatic Document Feeder (ADF) .....	33
Scan from the Front or Rear Feed Tray .....	35
Scanning using AutoLaunch .....	36
Using the Carrier Sheet .....	38
Scanning Interfaces .....	41
 <b>Maintenance .....</b>	 <b>43</b>
Safety Precautions .....	43
Hardware Properties .....	44
Device Settings .....	44

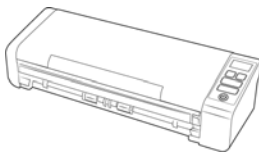
Driver Settings .....	45
Clearing Paper Jams .....	46
Cleaning the Scanner .....	46
Cleaning Inside the Automatic Document Feeder .....	47
Replacing the ADF Pad and Roller(s) .....	49
Replacing the Separation Pad .....	49
Replacing the Feed Roller .....	51
Troubleshooting .....	55
Error Light Troubleshooting Codes .....	57
Uninstalling Your Scanner .....	58
Visioneer® Patriot P15 Specifications .....	59
Visioneer® Patriot P15 Parts List .....	61
<b>Appendix A: Copy Regulations .....</b>	<b>63</b>
United States .....	63
Canada .....	64
Other Countries .....	65

# WELCOME

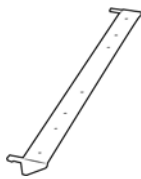
Your new Visioneer® scanner can quickly scan stacks of single-sided or double-sided pages and place their electronic images on your computer.

## WHAT'S IN THE BOX

Before proceeding, check the contents of the box. If items are missing or damaged, contact the dealer where you purchased the scanner.



Visioneer® Patriot® P15



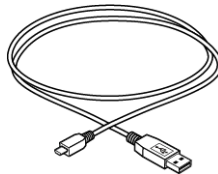
Rear paper feed



Installation Disc



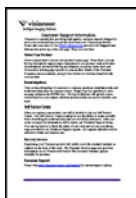
Quick Install Guide



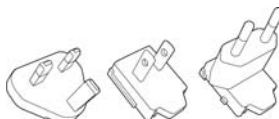
USB Cable



USB Power Cable



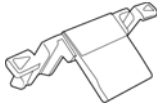
Warranty Card



Power plug adapter



Power Supply



Spare ADF Pad

## SYSTEM REQUIREMENTS

- Intel Pentium 4 or equivalent processor
- DVD-ROM drive capable of reading Dual Layer DVDs
- Universal Serial Bus (USB) port
- Microsoft® Windows® operating system:
  - 32-bit or 64-bit Windows 7 (Service Pack 1)
  - 32-bit or 64-bit Windows 8 / 8.1
  - 32-bit or 64-bit Windows 10

- 2 gigabyte (GB) internal memory (RAM)

- Minimum available hard disk space:

- 350 MB for the scanner driver
- 1 GB for Visioneer OneTouch
- 1 to 2 GB for each additional application

Please refer page 22 for a list of the applications provided with your scanner.

- Monitor (recommended settings):

- Color quality of 16-bit or 32-bit
- Resolution set to at least 800 x 600 pixels

Refer to your Windows documentation for instructions on setting the color quality and resolution for the monitor.

## DOCUMENTATION

**The following printed documentation is provided in the box:**

- **Installation guide**—abbreviated scanner setup and installation instructions.

**The following soft-copy documentation is available on the installation disc:**

- **Scanner user guide**—instructions for scanner setup, installation, operation, maintenance, safety, and warranty
- **OneTouch scanning guide**—instructions for configuring and scanning using OneTouch

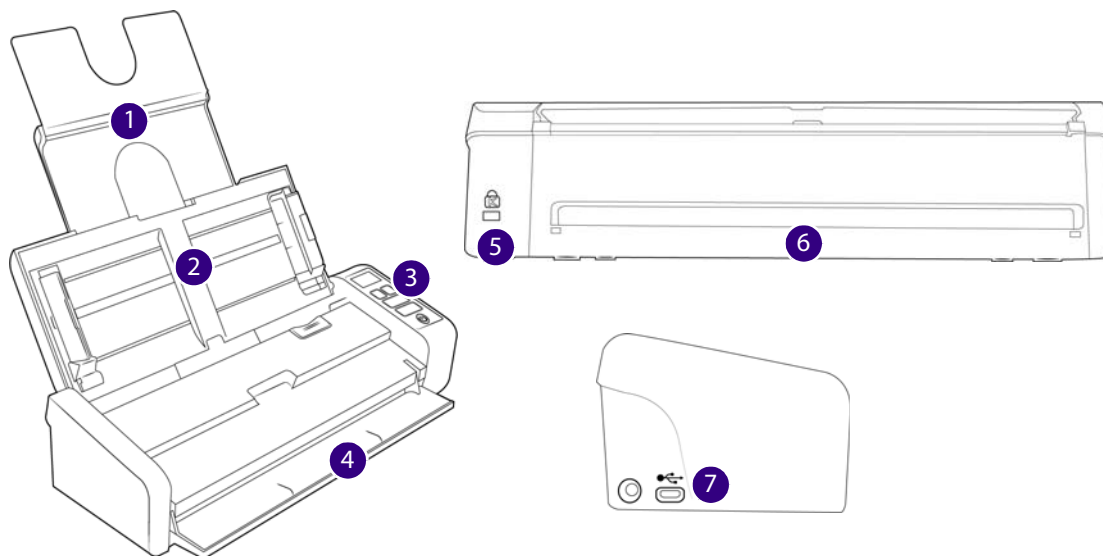


- **TWAIN scanning guide**—instructions for accessing and scanning using the TWAIN interface
- **Patch code sheets**—use with an application that supports detection of patch code data when using the TWAIN interface. The patch code page layouts have been specifically designed for your scanner. The file contains Patch 1 layouts for A4 and U.S. Letter size pages.

Make sure you print the correct page size for the paper in your printer. Also, make sure the application you are using is not set to automatically scale the page to fit on the paper in your printer.

- **ABBYY FineReader Sprint**—contains detailed information using the application software, including information on using Optical Character Recognition to create editable text files from the scanned documents.
- **Findo**—contains detailed information using the application.
- **ABBYY Business Card Reader**—contains detailed information using the application.

## THE VISIONEER® PATRIOT P15 FEATURES

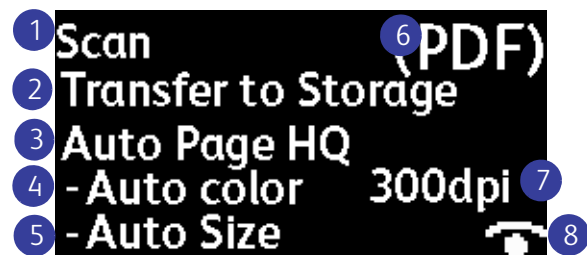


1. **Input Tray**—Holds the documents in the Automatic Document Feeder for scanning.
  - **Extension**—Pull out and flip open input tray extensions to support various document lengths.
  - **Paper Guides**—Slide to adjust to document width.
2. **Automatic Document Feeder**—Feeds documents through the scanner during scanning.
  - **ADF Cover Release**— Pull to open the Automatic Document Feeder.
3. **Control Panel**—OneTouch scanning controls. The buttons are touch sensitive and do not require heavy pressure to activate.
  - **LCD Screen**—Displays the selected OneTouch function for the Simplex and Duplex buttons.
  - **Function Buttons**—Select the scan setting for the OneTouch buttons. Touch the up or down arrow to cycle through the settings.
  - **Simplex Button**—Touch to scan single-sided documents.

- **Duplex Button**— Touch to scan double-sided documents.
  - **Status Light / Power Button**—Turns the scanner's power on/off and indicates the scanner's status.
4. **Front Feed tray**—Open to feed items through the front of the scanner.
  5. **Safety Lock Slot**—Connect a Kensington® style safety lock.
  6. **Rear feed** —Feed items through the back of the scanner.
  7. **Connections**—Scanner connection ports.
    - **Universal Serial Bus (USB) Port**—Connect the scanner to the computer via the USB 2.0 cable.
    - **Power Jack**—Connect the power cord to the scanner.

## LCD SCREEN

When scanning with OneTouch, The LCD screen displays a summary of the selected scan options.



1. **OneTouch Function**
2. **Destination**
3. **Configuration name**
4. **Mode**
5. **Page Size**
6. **Format**
7. **Resolution**
8. **Acuity** — If Acuity is active, this icon will be shown.

It is possible to scroll through all OneTouch functions by touching the up or down function buttons. The final screen shows scanner and driver information. On this screen only, pressing Simplex or Duplex will cycle through the information that is available.

1. **Counters:**
  - **Total** — Total number of scans performed
  - **Pad Count** — Number of scans since the separation pad was replaced. When 30,000 scans are reached, a notification will be shown on the computer the next time a scan is initiated and the option on the LCD screen will flash. This counter can be reset in the [Device Settings](#) menu.
  - **Roller Count** — Number of scans since the roller was replaced. When 100,000 scans are reached, a notification will be shown on the computer the next time a scan is initiated. This counter can be reset in the [Device Settings](#) menu.

- **Clean Count** — Number of scans since the scanner was cleaned. When 1,000 scans are reached, a notification will be shown on the computer the next time a scan is initiated. This counter can be reset in the [Device Settings](#) menu.

## 2. Scanner Details

- **Firmware version**—this is the scanner's firmware version number.
- **Serial number**—the scanner's unique identification number.

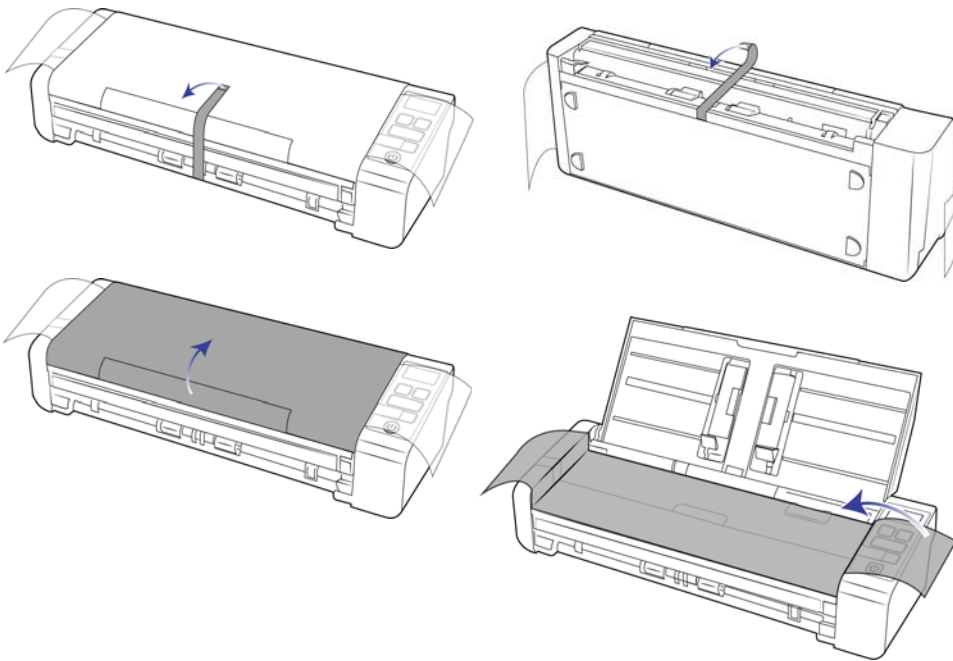
## 3. Software Versions

- **Driver** — this is the version of the scanner's driver.
- **Acuity** — this is the version of Acuity installed
- **OneTouch** — This is the version of OneTouch installed.



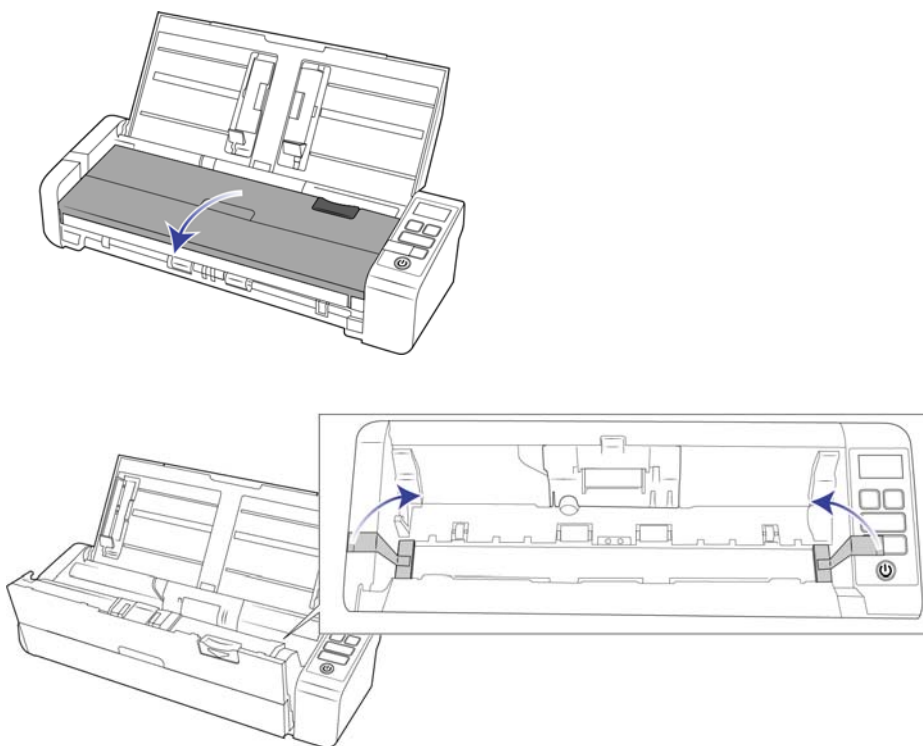
# SCANNER SETUP

1. Remove the scanner from its protective foam and plastic bag.
2. Remove any shipping tape from the scanner as indicated in the following illustration(s).



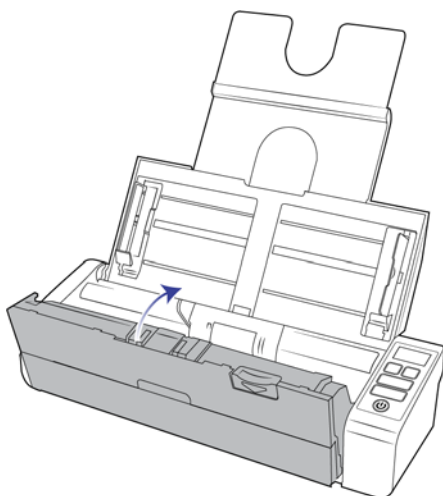
The above illustrations are for example purposes only. Your scanner's packaging may vary slightly.

3. Open the automatic document feeder cover and remove any tape or protective foam from inside the feeder.



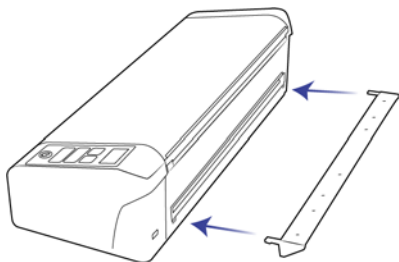
The above illustrations are for example purposes only. Your scanner's packaging may vary slightly.

4. Close the feeder cover when you are finished.



The above illustrations are for example purposes only. Your scanner's packaging may vary slightly.

5. Attach the rear feed paper guide to the scanner



## CONNECT THE POWER CORD

You can power the scanner through the standard power cord to a wall outlet, or use the USB power cord to power the scanner through a USB port on the computer.

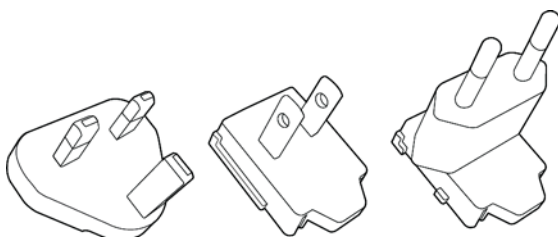
If powered by the USB connection only, the scanner will not be able to reach its maximum speed. In order to reach the maximum rated speed, the supplied power supply should be used.

## Connect the scanner power to the wall

**Note:** Only use the power supply (WA-36A24R made by APD) included with your scanner. Connecting any other type of power supply may damage your scanner, and will void its warranty.

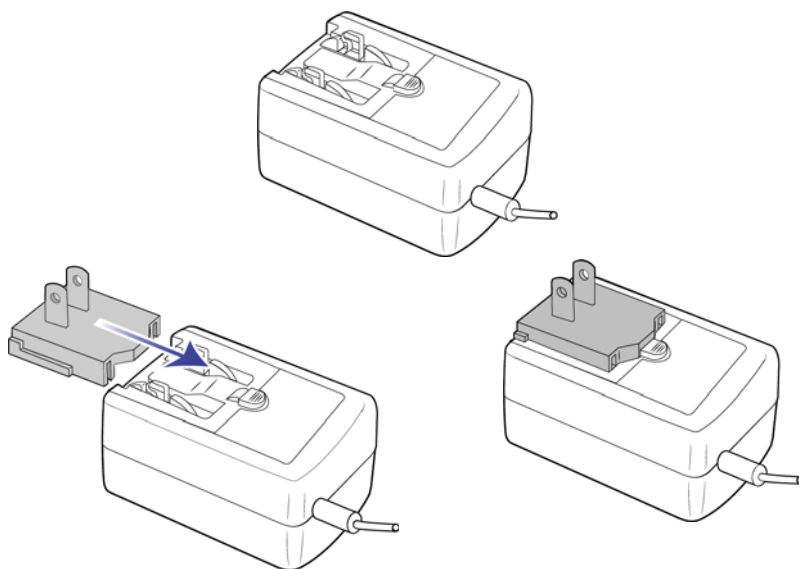
### Assemble the power adapter:

1. Select the power plug adapter that is appropriate for the wall outlet in your country.

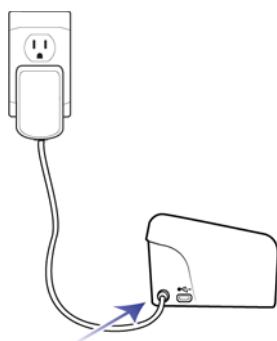


U.K., North America, Europe

2. Slide the power plug adapter into the power supply base.



3. Plug the power supply into the power port on the scanner.
4. Plug the power cord into the power supply and into a wall outlet.

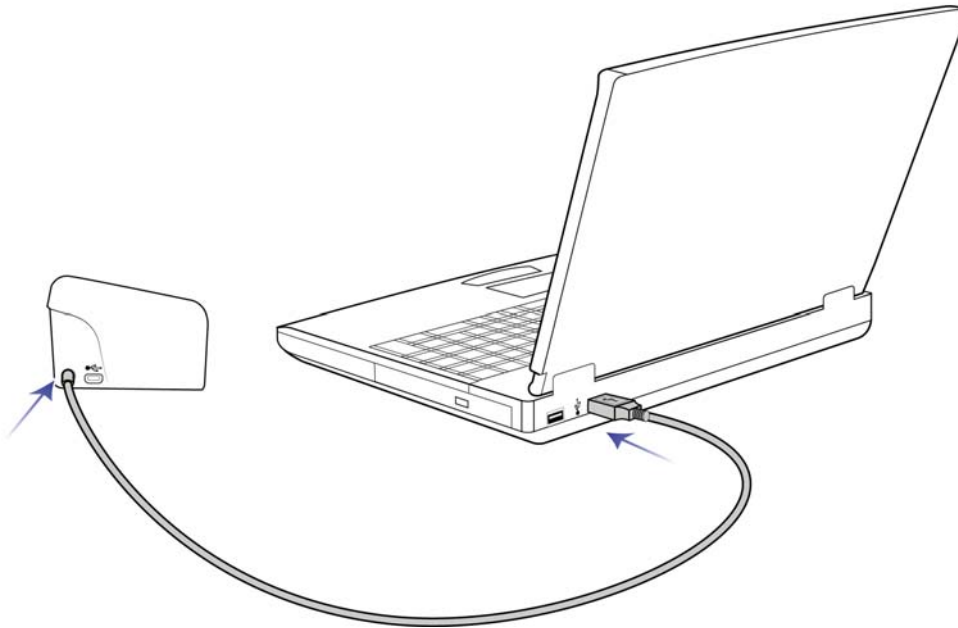


## Connect the scanner power to the PC

1. Plug the round end of the USB power cord into the power jack on the scanner.



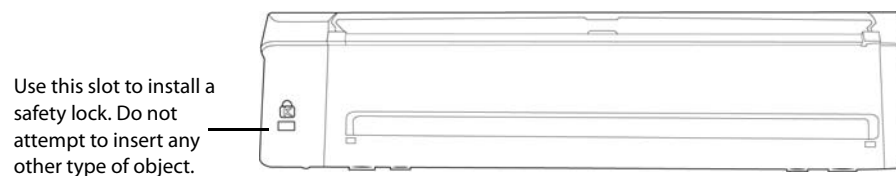
2. Plug the flat end of the USB power cord into an available USB port on the back of the computer. We do not recommend using a USB hub to power the scanner.



**Note:** Only use the USB power cable included with your scanner. Connecting any other type of USB power cable may damage your scanner, and will void its warranty. If you do not have your USB power cable, you can order a new one by contacting our Customer Service department. Please refer to the Technical Support Card, included with your scanner, for our company contact information, or visit the Parts & Accessories page for your scanner at [www.visioneer.com](http://www.visioneer.com).

## SAFETY LOCK

Your scanner may have a slot for installing a Kensington® style safety lock. This slot can be identified by the lock icon. It is to the left of the USB port on the scanner. When following the instructions in this document, make sure you connect the USB cable into the USB port which is identified by the USB symbol.



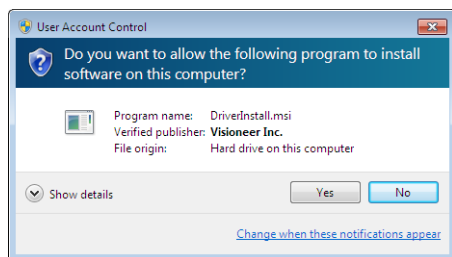
A lock is not provided with the scanner and this document does not contain instructions on purchasing and installing a safety lock. If you choose to use a safety lock, please carefully read the installation instructions provided with the lock. More information about Kensington® locks can be found at [www.kensington.com](http://www.kensington.com).



# INSTALLATION

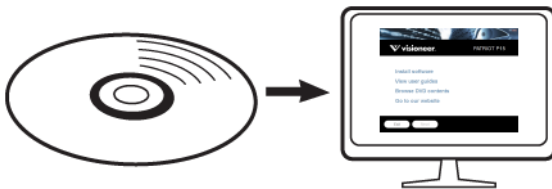
## Please make sure of the following before you begin installation:

- If you are prompted to reboot during installation, please select “No”. Finish installing the rest of the software, then close all open windows and reboot your computer.
- The information in this guide may cover software not provided with the scanner you purchased. Please disregard any information about the software not applicable to your scanner.
- If your computer has AntiVirus or AntiSpyware software running, you may encounter alerts or messages during installation asking you to allow the installation to proceed. Although the messages will differ based on the software your computer is running, in each case you should allow the installation to proceed if that option is available. Alternatively, you can turn off the AntiVirus or AntiSpyware software before installing your scanner, but if you do, make sure to turn it back on again when installation is finished.
- If your computer is running Windows Vista or later, you may see the Windows User Account Control screen asking you to confirm system changes. Click the Yes button to allow the installation to proceed.



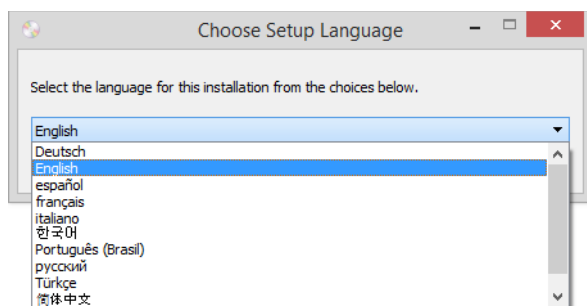
## INSTALL THE SOFTWARE AND CONNECT THE SCANNER

1. Start Microsoft Windows and make sure that no other applications are running.
2. Insert the installation disc into your computer's DVD-ROM drive.



The disc automatically starts.

3. The Select Language window opens. Click the drop-down menu arrow and select the language to use. Click **OK**.



The disc's Main menu window opens.

**Note:** If the disc does not start, check the following:

- Make sure the disc drives door is completely shut.
- Make sure the disc was inserted in the drive in the proper direction (label side up).

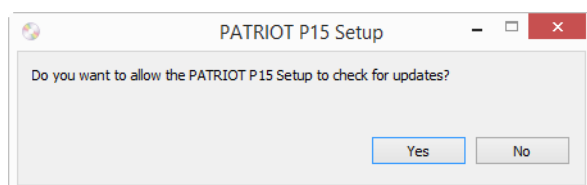
To launch the disc manually:

- Open the Windows options for your computer's disc drives.
- Double-click the icon for your DVD-ROM drive.
- The Installation menu for the disc should now open.

If the menu does not open:

- From the list of files on the disc, double-click the file named setup.exe.

4. A prompt will be shown to allow the installer to search online for software updates. Select **No** to install the software on the disc only.

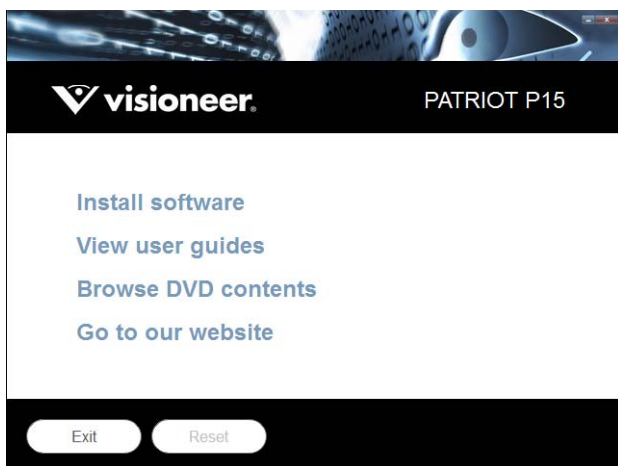


5. If online updates are approved, it will first check to see if there are newer versions of the installer.
6. Plug the USB cable into the USB port on the scanner then into a USB port on the computer. Turn on the scanner power.

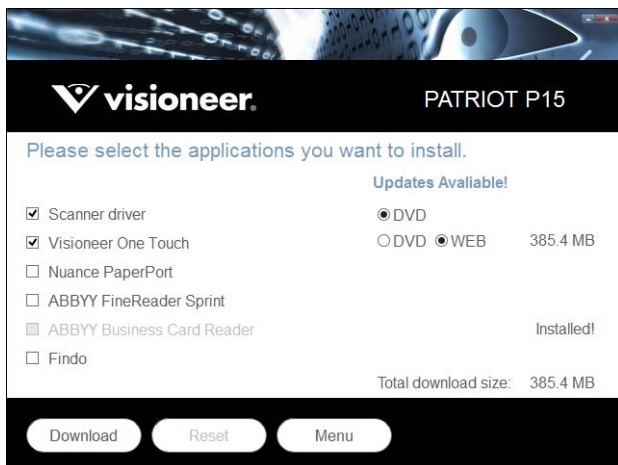


**Note:** Select **Cancel** to install the software on the disc only.

7. When this is complete, the Main Menu will be shown.
8. On the Main menu, select **Install software**.



9. Make sure the boxes for **Scanner Driver** and **Visioneer OneTouch** are selected, as well as any other applications you want to install.



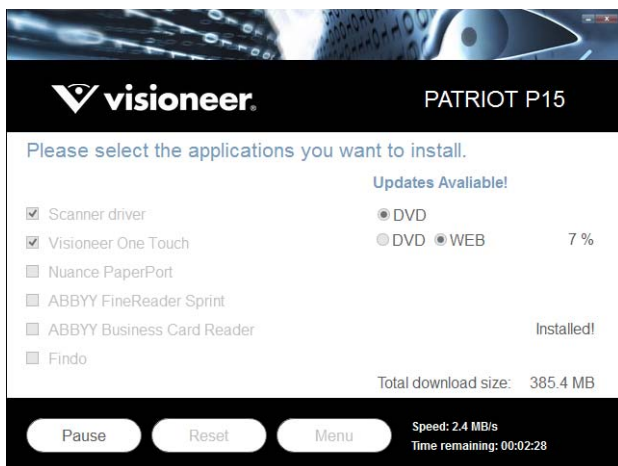
**Note:** The software provided with your scanner may differ slightly from the list shown in the window.

10. If a version of the software is already installed on the system, the option will be greyed out. However, if there is a newer version available on the disc or online, it will be possible to upgrade by selecting the appropriate button option.
11. If there are newer versions of the software available online, the **Web** button will be enabled. If there is no newer version then only the **DVD** button will be enabled.

Select which option to install the software from.

12. If any of the Web buttons have been selected, the software will have to first be downloaded by clicking **Download**.

- After the download has begun, it can be paused. If changes to the selections are required, it is necessary to click **Reset** while the download is paused. This will allow the settings to be changed.



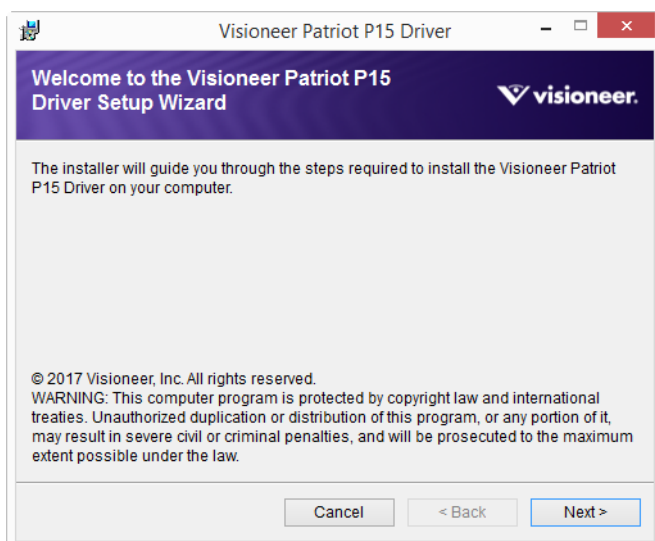
**Note:** Clicking the Reset button in either the Main menu or the Install menu will cause both partially completed and previously downloaded files to be deleted. In order to be installed they will either have to be downloaded again or installed from the DVD.

- Once all software has been downloaded, click **Install** now.

## Installing the Scanner Driver

The scanner driver installation will start first.

- The Welcome screen for the scanner driver Setup Wizard opens. Click **Next**.

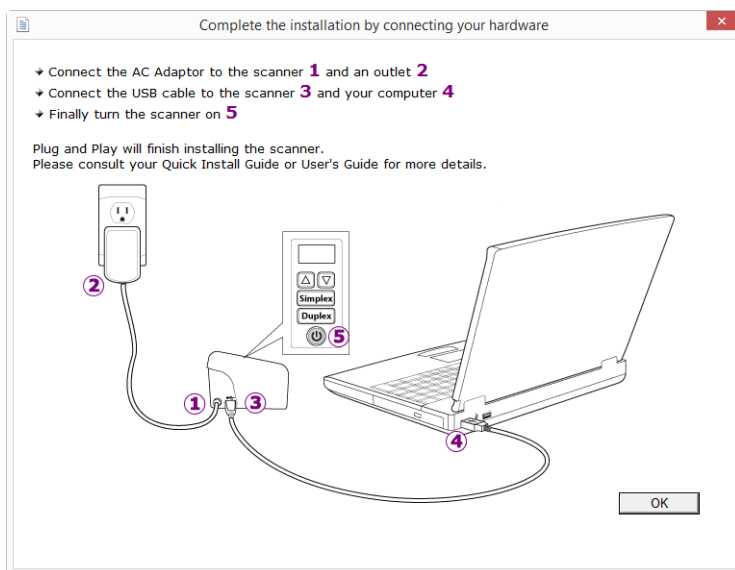


**Note:** there may be an option in the installation window to remove any current scanning profiles. You will see this prompt if you already have a previous version of the scanner driver installed. Select the option in the installation window only if you want the existing profiles *removed*.

2. On the License Agreement window, read the license agreement. If you accept the terms, select **I Agree** then click **Next**.

If you choose not to accept the license agreement, click **Cancel**. Click **Close** on the Installation Interrupted window.

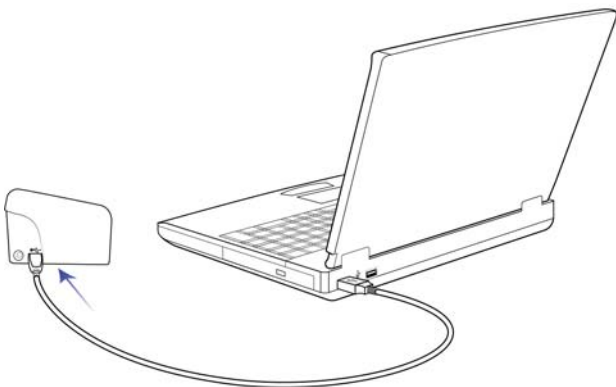
3. The software will now be installed.
4. **Stop** when you see the “Complete the installation by connecting your hardware” window. Do not click **OK** yet. Leave the window open and proceed to the next section.



**Note:** If you do not see this on-screen diagram for connecting the scanner, stop and follow the instructions below.

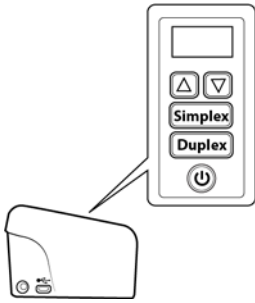
## Connect the USB Cable and Turn on the Power

1. Remove any tape from the USB cable.
2. Plug the USB cable into the USB port on the scanner then into a USB port on the computer. Check your computer's manual for USB port locations.



If the plug does not attach easily, make sure that you are plugging it in correctly. Do not force the plug into either connection.

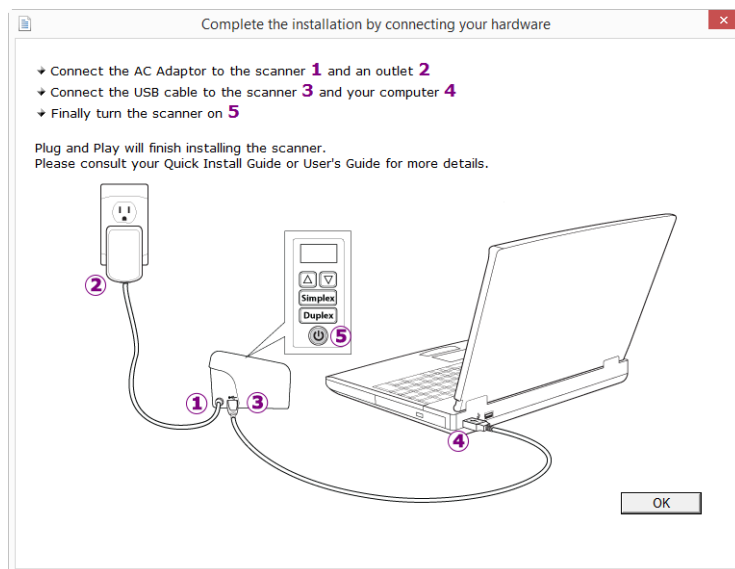
3. Turn on the scanner power.



The status light comes on and flashes indicating that the scanner is receiving power.

Your computer recognizes that a scanner has been plugged into the USB port and automatically loads the appropriate software to run the scanner.

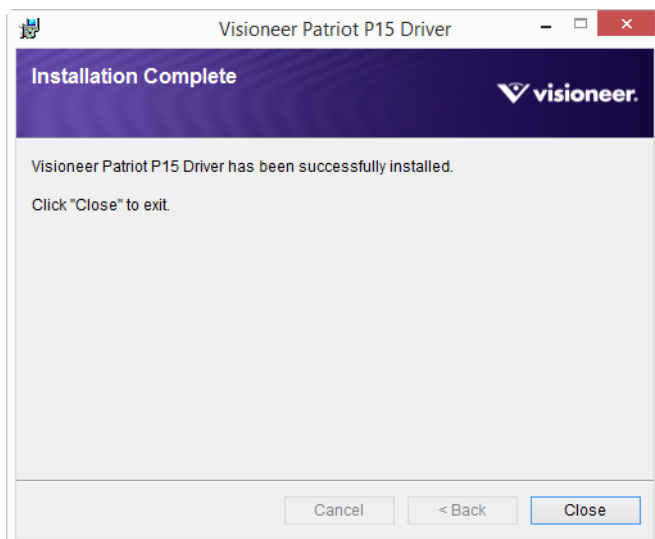
4. When you're certain that the software has completely loaded, return to the "Complete the installation by connecting your hardware" window.



5. Click **OK** to complete the installation process.



- Click **Close** on the Installation Complete window to close and exit the driver installer.



## Installing Visioneer OneTouch

The Visioneer OneTouch software installation will start automatically after you click **Close** on the driver Installation Complete window.

- Click **Next** on the Welcome to the OneTouch Setup Wizard.



**Note:** there may be an option in the installation window to remove any current scanning profiles. You will see this prompt if you already have a previous version of OneTouch installed. Select the option in the installation window only if you want the existing profiles *removed*.

- On the Visioneer License Agreement window, read the license agreement. If you accept the terms, select **I Agree** then click **Next**.

If you choose not to accept the license agreement, the installation will terminate and OneTouch will not be installed.

3. Click **Close** on the Installation Complete window to close and exit the software installer.
4. After OneTouch is installed, a splash screen will be displayed while it initializes and searches for installed scanners. Please wait for this screen to disappear before attempting to use OneTouch.



**Note:** If you selected other software to install from the DVD the installation for that software will automatically start after you click **Close** on the Installation Complete window. Follow the instructions on-screen to install each application you selected.

## INSTALLING ADDITIONAL APPLICATIONS

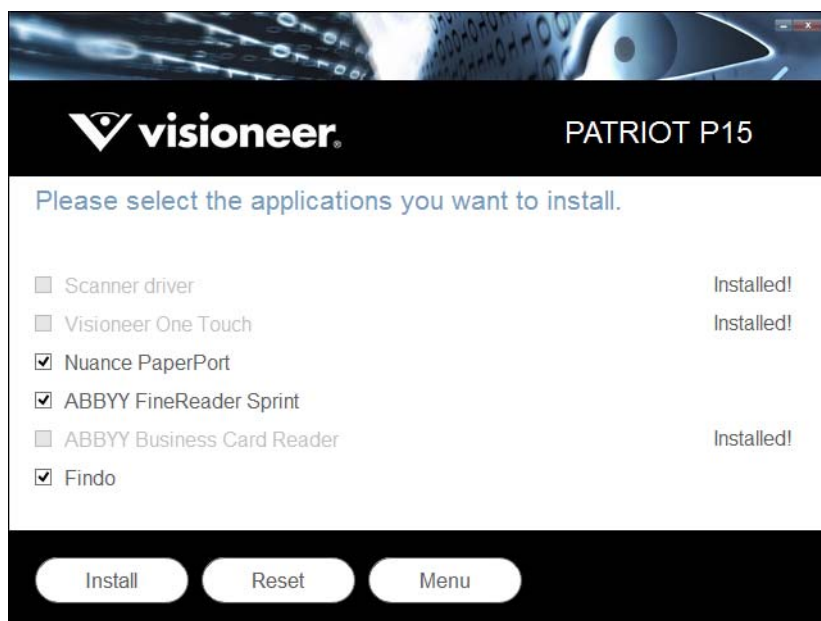
Your scanner includes free, additional applications as described in the table below.

1. Return to the disc's Main menu and click **Install software**.
2. If a version of the software is already installed on the system, the option will be greyed out. However, if there is a newer version available on the disc or online, it will be possible to upgrade by selecting the appropriate button option.
3. If the software on the disc is up to date then the software will be installed from the DVD. However, if there are newer versions of the software available online, the **Web** button will be shown and selected by default.

Select the desired location to install the software from.

4. If any of the Web buttons have been selected, the software will have to first be downloaded by clicking **Download Now**.

5. Once all software has been downloaded, click **Install** now.



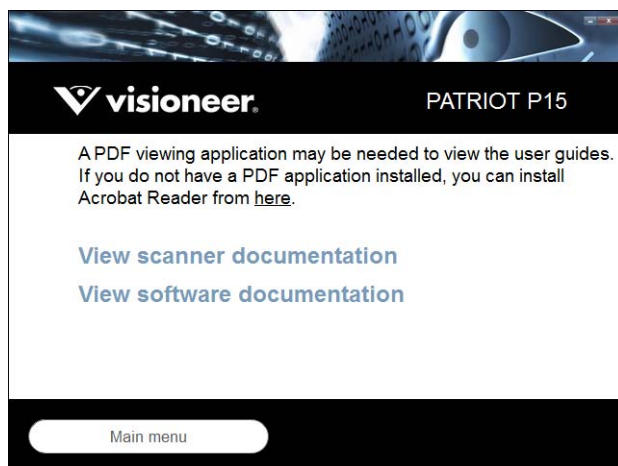
**Note:** The software provided with your scanner may differ slightly from the list shown in the window.

6. Follow the instructions on the screen to install each of the additional applications.

Software	About the Software
ABBYY FineReader Sprint	Software that makes it easy to scan paper documents, using your Multifunction Printer or scanner, and convert them into editable formats including Microsoft® Word and Excel®. Highly accurate, FineReader eliminates the need to retype or reformat documents — while also improving the overall quality of your scans. You can see more information about this application at <a href="http://www.abbyy.com">www.abbyy.com</a>
Findo	Findo solves a fundamental problem. You know that file exists, but can't find it. Findo is an intelligent search assistant that finds important information by searching through email, folders and files based on a description. Once a document is scanned, you will be able to find it whether you saved it to a hard drive, sent it via email or uploaded it to another storage location. You can see more information about this application at <a href="http://www.findo.com">www.findo.com</a>
ABBYY Business Card Reader	ABBYY Business Card Reader 2.0 for Windows is a handy application that allows you to capture contact information from scans or digital photos of business cards and save it in multiple formats.

## VIEW THE USER GUIDES

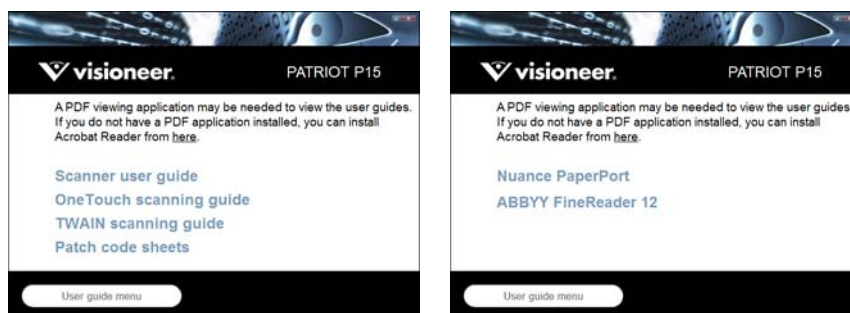
1. Return to the disc's Main menu and click on **View user guides**.



2. Click on **View scanner documentation** to access the scanner user guide and scanning guides for OneTouch and TWAIN.
  - **Scanner user guide**—Instructions for scanner setup, installation, operation, maintenance, safety, and warranty
  - **OneTouch scanning guide**—Instructions for configuring and scanning using OneTouch
  - **TWAIN scanning guide**—Instructions for accessing and scanning using the TWAIN interface

Click on **View software documentation** to access the user guides for the software applications provided with the scanner.

From either of these user guide windows, click on the **User guide menu** button to return to the main user guide window, then select the other documentation section to view the user guides.



3. Click the links of the guides you want to view.
4. When you're finished, click **Main menu** to return to the Main menu window and click **Exit**.
5. Remove the installation disc and store it in a safe place.

## REGISTER YOUR SCANNER

Registering your scanner is important as it provides you with access to our free telephone support service. Registration also gives you free access to software updates for your scanner.

You will need an active network connection to register your scanner. If you do not have network access you can contact our customer service department to register the scanner. Please refer to the Technical Support Card, that you received with the scanner, for our customer service contact information.

1. Open an Internet Explorer window, or any other Internet browser you have installed on your computer.
2. In the web address field type [www.visioneer.com](http://www.visioneer.com).
3. Press Enter on your computer's keyboard or click the option on screen to go to the web address.
4. When the Visioneer® scanners web page loads click on **Register Your Product**.
5. Fill in the registration form, all required fields have an asterisk (\*).  
A valid email address is required for registration.
6. You will be asked to enter the serial number for the scanner, it is located on the back or underside of the scanner.
7. After filling in the form, click on **Submit Your Registration** to complete the registration.



# LOADING DOCUMENTS TO SCAN

Always remove any staples or paper clips from documents before inserting them into the scanner. Staples and paper clips can jam the feed mechanism and scratch the internal components. Also remove any labels, stickers, or Post-It™ notes that may come off during the scanning process and get stuck in the scanner. Misuse as described here will void your scanner's warranty. Please go to [www.visioneer.com](http://www.visioneer.com), select your product, and then click the "Warranty Program" link to view the warranty terms and conditions for your scanner.



## SUPPORTED DOCUMENT TYPES

You can scan the following types of documents and cards with this scanner.

- Maximum amount of paper in the input tray
  - Approximately 20 pages of 20 lb (75–80 g/m<sup>2</sup>) new printer paper
- Document size
  - Minimum size (width x length) – 2.25 x 2 inches (57 x 51 mm)
  - Maximum size (width x length) – 8.5 x 14 inches (216 x 356 mm)
  - Maximum length with long document enabled
    - 118 inches (2997 mm) up to 300 dpi
    - 59 inches (1499 mm) at 400 dpi and higher

We recommend scanning one page at a time when the documents you are scanning are longer than 14 inches (356 mm).
- Mixed document stacks
  - Scanner minimum to maximum without long document enabled

Arrange the documents so that all items are centered in the stack. The document sensor, paper separation, and feed rollers are located in the middle of the paper path. If smaller items are offset from the center they will not be detected. This will cause feeding issues and paper jams.
- Paper thickness between 13–26 lb paper (50–105 g/m<sup>2</sup>)

- Embossed plastic cards up to 1.25 mm thick
- Non-embossed plastic cards up to 1 mm thick

When scanning small pages such as Business Cards, we recommend using the front feed.

## DOCUMENTS TO AVOID SCANNING

The documents in this list can be scanned, but please note that scanning documents of this type will reduce the life of the scanner. Maintenance will be required more often and replaceable parts will wear faster. These types of documents will jam more frequently and damage to the original documents may occur. If you do choose to scan these document types, do not scan large batches. This type of use is not covered under the scanner warranty and alters replacement parts life expectancy.

We recommend you limit the amount or completely avoid scanning documents that are in this list.

- Curled, wrinkled or folded documents may cause paper jams or multiple pages being fed through the scanner at one time.
- Perforated or punched paper that could tear when the separation roller engages.
- Coated paper or photographs where the coating can flake off during scanning and leave residue in the scanner.
- Extremely smooth, shiny, or highly textured paper may cause the paper feed rollers to slip across the page and cause the scanner to report a paper jam.
- Carbonless copy paper may tear while being fed through the scanner and the pressure of the rollers may leave streaks on the page. The chemical coating on this paper will rub off on the rollers during the scan process, increasing the frequency of miss-feeds and paper jams.
- Partially transparent paper such as tracing paper as any images from the opposite side of the page or black background will appear in the scanned images.

## UNSUPPORTED DOCUMENT TYPES

Do not scan the following types of documents as they may cause damage to the scanner.

- Items outside of the specified supported sizes, thickness, and weight defined in this document.
- Non-rectangular or irregularly shaped paper will cause the scanner to detect and report document skew errors or paper jams.
- Carbon paper that will leave residue in the scanner and on the rollers that will transfer to the next set of documents scanned.
- Documents with hard items attached such as paper clips, binder clips, and staples.
- Documents with wet ink or white-out.
- Thermal or photosensitive paper.
- Overhead projector sheets, plastic film, camera film, and any other type of transparent or partially transparent plastic item.

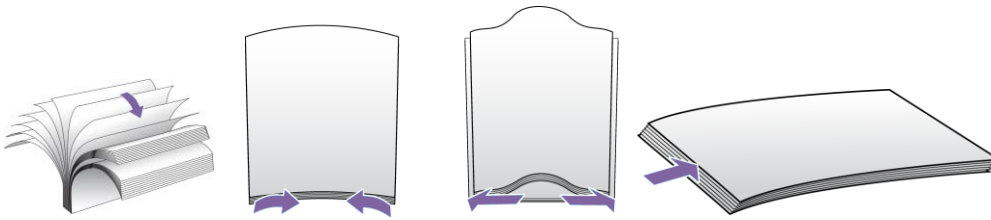


- Documents that have been glued together.
- Cloth or metallic sheets.

## SCANNING FROM THE AUTOMATIC DOCUMENT FEEDER (ADF)

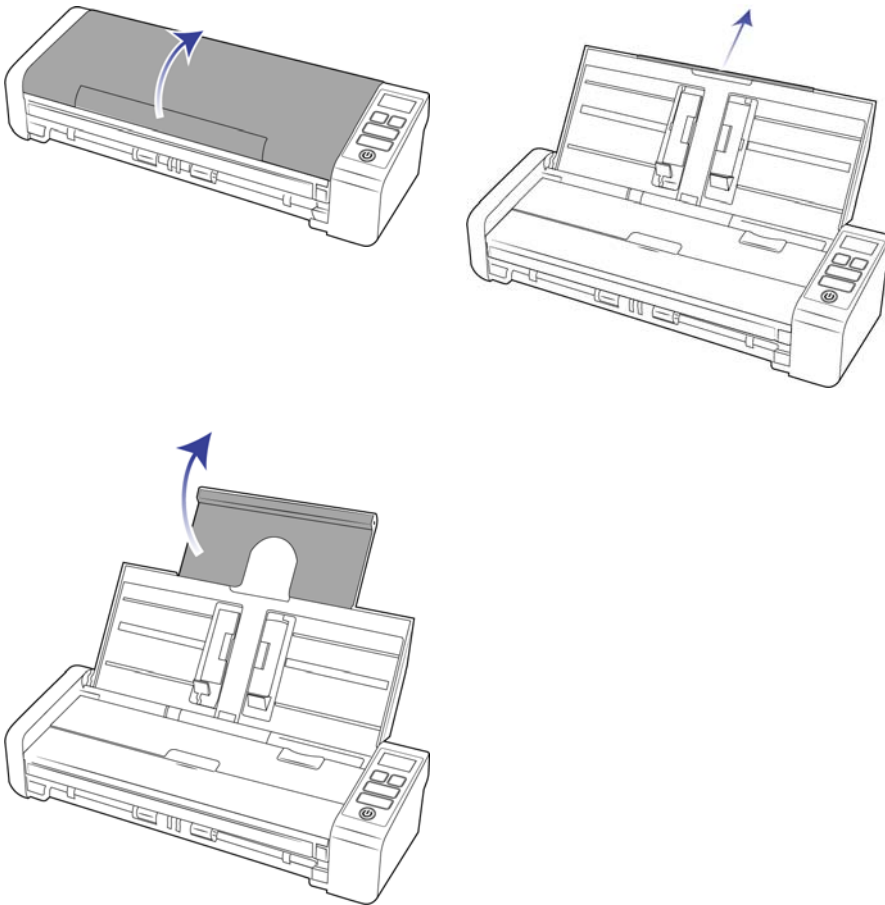
### Preparing Documents for Scanning

- Fan the documents to make sure all pages in the stack are separated.
- Bend and then flatten the document stack to make sure the horizontal edges are aligned to help prevent paper from skewing while being pulled through the scanner.
- Pinch the ends to align the leading edges slantwise to help prevent multiple pages from being fed through at a single time.

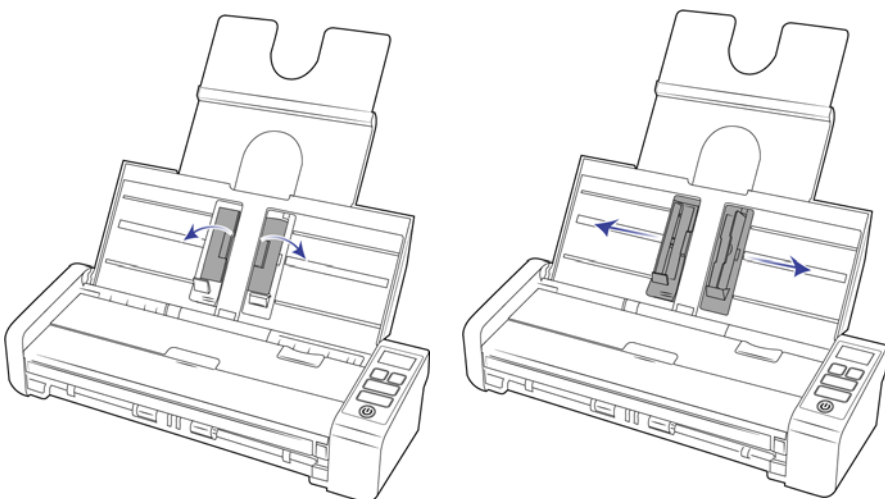


## Loading Documents

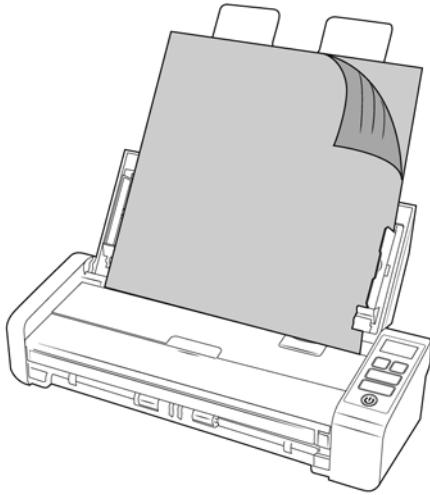
1. Pull out and flip open input tray extensions to support various document lengths.



2. Flip up the paper guides and adjust them to the width of the documents you are scanning. Extend the input tray.



3. Load the documents *face down* with their tops into the Automatic Document Feeder.



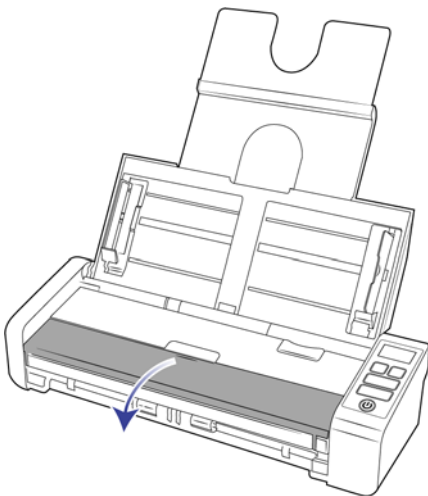
4. You can now scan the documents using the scanner buttons, OneTouch, or one of the other scanning interfaces.

## SCAN FROM THE FRONT OR REAR FEED TRAY

When scanning small pages such as Business Cards, we recommend using the front feed. Also ensure that **Crop to Original** and **Straighten Image** are used.

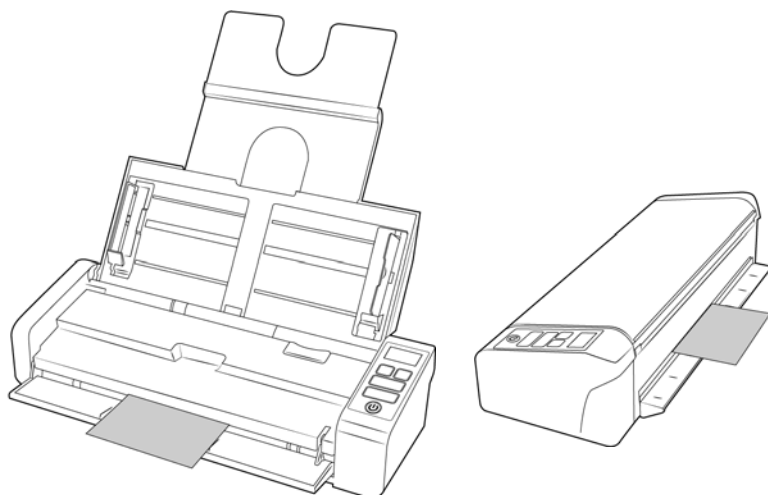
**Note:** You can only load items into the scanner from either of the feed trays or the automatic document feeder (ADF) at each scan time. The scanner will jam if you load paper into the ADF after an item has already been placed into one of the feed trays.

1. Open the front-feed tray.



2. Place an item face up, on the front or rear feed tray, aligned to the registration marks on the tray and insert it into the scanner.

**Note:** If scanning a plastic ID Card or similar, ensure the object is aligned to the plastic guides. These are designed to feed the card at a slight angle to avoid image distortion when scanning thick plastic.



3. Touch the scan button to start a scan using the OneTouch function displayed on the LCD screen.
4. By default, after the page has been scanned it will be returned back through the entrance it was fed through.

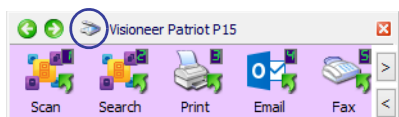
## Scanning using AutoLaunch

If you want to scan from OneTouch button panel on screen, or to be able to place a page in the scanner and wait until you are ready to initiate the scan, you can turn the AutoLaunch feature off. This option is in the Application Settings for your scanner's hardware properties.

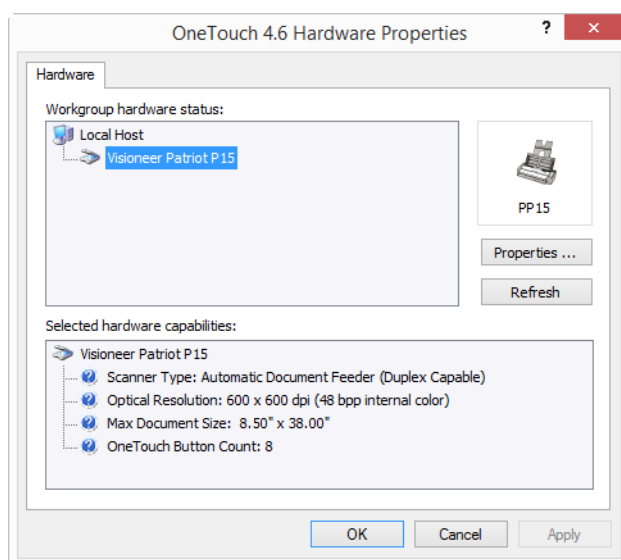
1. Click on the OneTouch icon in the Windows notification area on the right side of the screen.



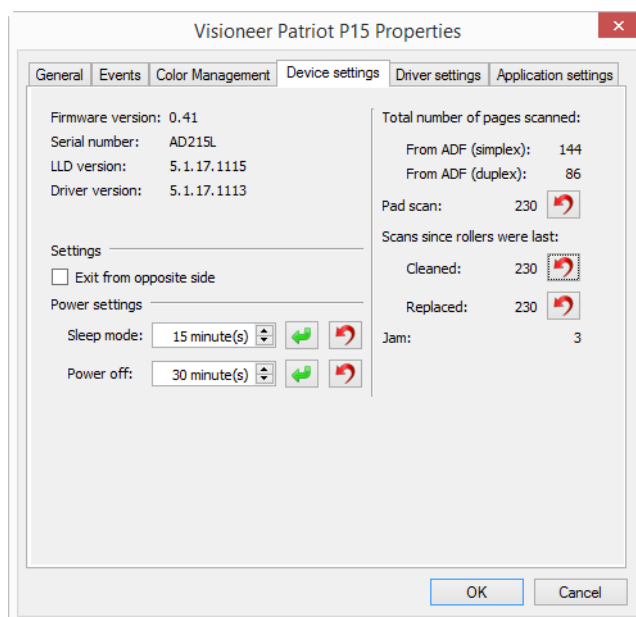
2. Click on the scanner icon to the right of the green buttons, in the title bar of the OneTouch button panel.



- Click on the Properties button in the hardware properties window.

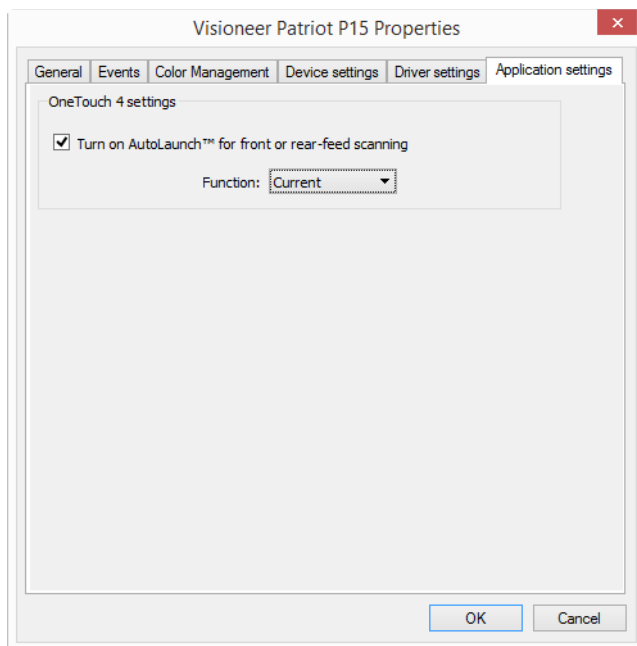


- In the scanner settings tab, select 'Exit from opposite side' if you wish the scanned items to be passed through the scanner and ejected from the opposite side.



- In the Application Settings tab, click on Turn on AutoLaunch for Scanning to select/deselect this option.

- **Function**—select the OneTouch function number that you want to use for automatic scanning. Select **Current** to always use the current function number shown on the scanner display.



6. Click on OK to save the changes and close the window. Click on OK to close the Hardware Properties window.
7. Place an item face down, on the front or rear feed tray, aligned to the registration marks on the tray and insert it into the scanner.
8. The scanner pulls in the item, scans and ejects it.

## Using the Carrier Sheet

We recommend using the TWAIN interface when scanning with the carrier sheet. The **Carrier sheet mode** option applies color correction specifically tuned for processing images of documents scanned using a carrier sheet. Please refer to the TWAIN scanning guide on the installation disc.

It is recommended that carrier sheet scanning is used only with the front or rear feed.

Not all scanners are supplied with a carrier sheet. Carrier Sheets can be purchased from the Parts & Accessories page for your scanner at [www.visioneer.com](http://www.visioneer.com).



**WARNING: the plastic bag for the carrier sheet poses a suffocation hazard. Keep the bag away from children.**

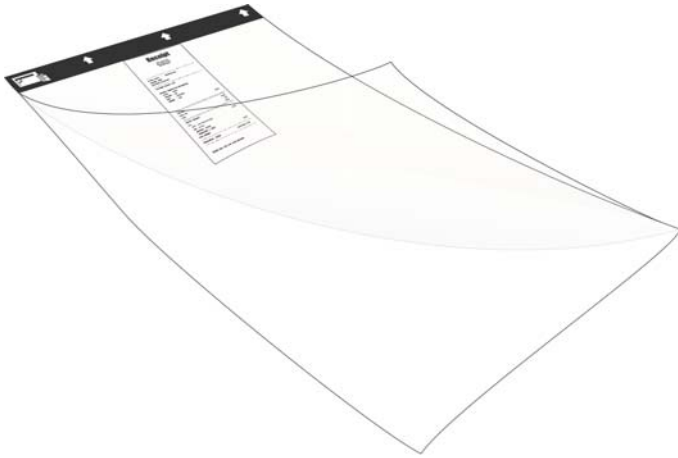
1. Take the carrier sheet out of its plastic bag.

We recommend that you keep the bag and place the carrier sheet back in the bag when you are done scanning. This will help to prevent scratches to the carrier sheet.

2. Remove the tissue paper.

3. Open the carrier sheet and place the item you want to scan in the center of the carrier sheet.

Ensure that the page is placed in the top of the carrier sheet with no visible gap. If the item you are scanning is not aligned to the centre, you may see inconsistent results or errors. It is also recommended that **Crop to Original** is enabled when scanning in this way.

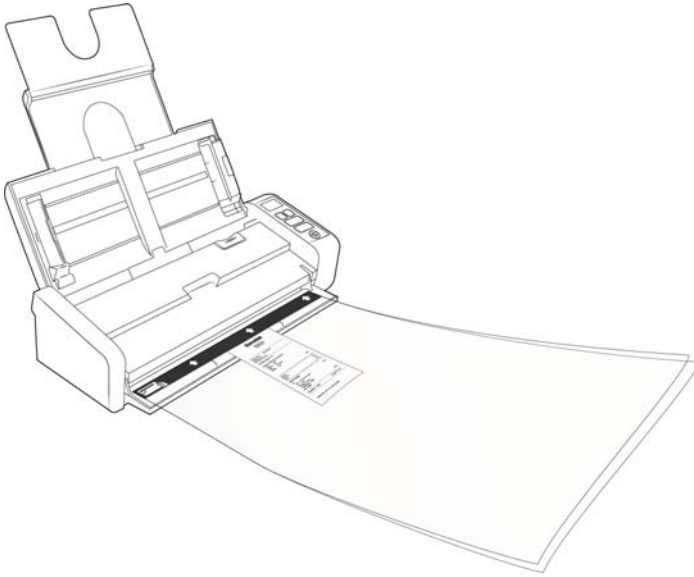


4. Open the scanner's TWAIN interface and select **Carrier sheet mode**.

- The **Carrier sheet mode** option is located on the scanner model tab in the **Document Settings** section in the TWAIN interface.



5. Place the carrier sheet in the scanner with the black edge in the paper feed slot.



6. Click on the **Scan** button in the TWAIN interface.

You may need to lightly push on the carrier sheet to help guide it into the scanner if the rollers do not immediately grab the sheet.

7. When scanning is complete, remove the item from the carrier sheet and place the carrier sheet back in its plastic bag.

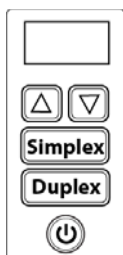
Store the carrier sheet in a place where it can remain in a flat like-new condition. Creases in the plastic can cause unusual light reflections while scanning which may appear as lines in the final image.



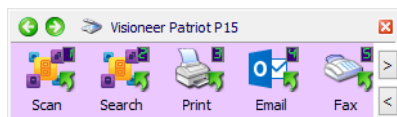
## SCANNING INTERFACES

- **OneTouch Control Panel**—When you touch the Simplex or Duplex buttons on the control panel, it will start scanning using the settings for the OneTouch configuration number shown on the LCD screen.

**OneTouch Button Panel**—Use this scan option when you want to scan from the computer screen. Scanning from the on-screen OneTouch Button Panel is the same as selecting a scanning option on the scanner, except you click an icon that represents the function.

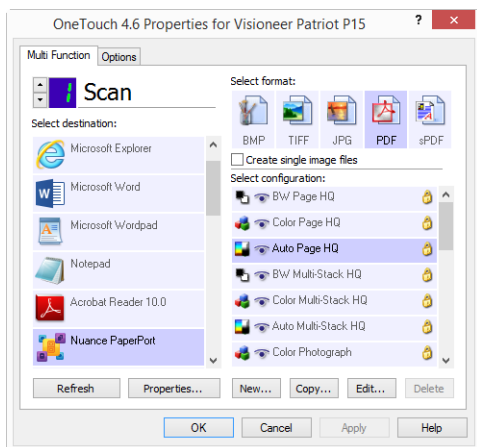


Scanner Control Panel

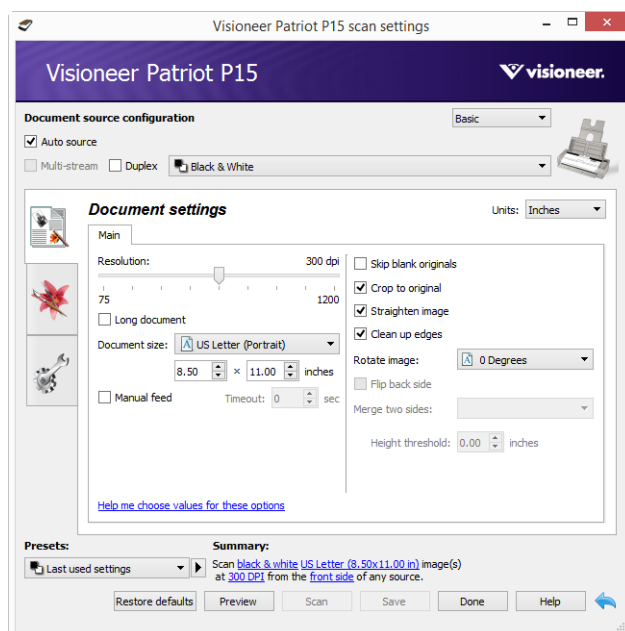


OneTouch Button Panel

Please see the OneTouch Scanning Guide on the installation disc for instructions. You can also click the **Help** button in the OneTouch Properties window to open the instructions in an Internet browser.



- **TWAIN and WIA Interface**—This option uses your scanner's TWAIN interface to scan. Select scanning options before scanning, put the document in the scanner, then click the **Scan** button in the TWAIN interface window.



Please see the TWAIN Scanning Guide on the installation disc for instructions. You can also click the **Help** button in the TWAIN interface to open the instructions in an Internet browser.

- **ISIS Interface**—This option uses the ISIS interface for scanning. Please refer the user manual for your ISIS scanning application for instructions on scanning with the ISIS interface.

# MAINTENANCE

This section contains information about maintenance, troubleshooting, uninstalling, scanner specifications, and spare parts.

## SAFETY PRECAUTIONS

When servicing the scanner you should take the following precautions to ensure your safety and prevent damage to the scanner.

### Do These

- Wear protective gloves when cleaning the scanner with Isopropyl rubbing alcohol. Rubbing alcohol may irritate sensitive skin.
- Only perform scanner maintenance as described in this chapter.
- Keep the scanner and cleaning supplies away from any open flame or heat source as any form of alcohol is flammable.
- Always read the instructions in each section carefully, the instructions are specific to the part you are installing or servicing.
- Move the scanner to an area that has adequate room for opening the scanner.
- If your scanner has a power cord and/or power switch, always turn off the scanner and unplug the power cord before performing maintenance, unless the maintenance instructions below specifically state to leave the scanner plugged in and powered on.
- Always unplug the USB cable from the scanner before performing maintenance, unless the maintenance instructions below specifically state to leave the scanner plugged in.
- Wear an anti-static strap to prevent electrostatic discharge when touching metal components.
- Keep all cleaning supplies, scanner parts and accessories out of the reach of children.

### Do Not Do These

- Never attempt installation of any part not described in this manual.
- Never service the scanner near a radiator or any other heat source.
- Never use aerosol sprays or compressed air, or attempt to lubricate parts with an oil or silicon spray.
- Never service the scanner in an area where there are open liquid containers.
- Never pour or spill liquid on the scanner or any of its components.

## HARDWARE PROPERTIES

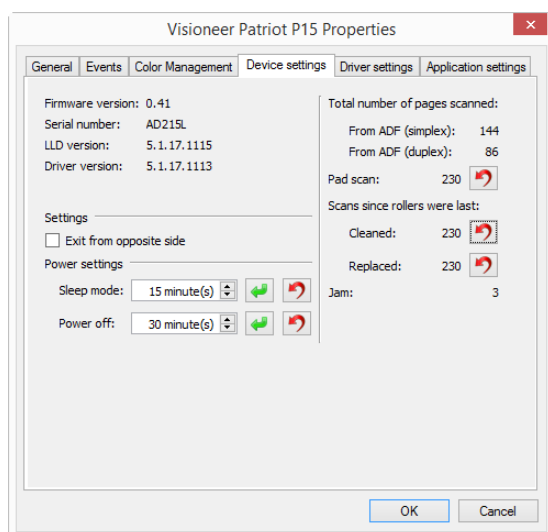
You can use the scanner's properties page to keep track of scanner maintenance, change some of the hardware options, configure the scanner interface behavior, and adjust application options that may be available for your scanner.

**To open the scanner hardware properties page:**

- **Windows 7 and later**—from the Windows Control Panel, open **Hardware and Sound** and then **Devices and Printers**. Right-click on the scanner and then select **Scan properties** from the list.

## Device Settings

The Device Settings tab shows the hardware information for your scanner. The options on the Device Settings tab will be available based on whether or not the scanner hardware supports the feature. Some features described herein may not be available for the current scanner. Please disregard any information about features that you do not see in the interface for your scanner.



## Scanner Details

- **Firmware version**—this is the scanner's hardware processor version number.
- **Serial number**—the scanner's unique identification number.
- **LLD version**—the scanner's base driver version. This is not the OneTouch software revision, TWAIN or WIA driver versions.
- **Driver version**—this is the version of the scanner's TWAIN driver.

## Scanner Configuration

- **Counters**—click the reset button next to the counter you want to set back to 0.

- **Show maintenance reminders**—select this option be notified when it is time to clean or replace the rollers. After cleaning or replacing the rollers, click the reset button next to the roller counters in this screen.

## Power Settings

- **Sleep mode**—sleep mode is the low-power state when the scanner is not in use. You can adjust the amount of time you want the scanner to wait before it goes into low power.

Click the green enter button to save any changes in the Sleep mode field.

Click the red reset button to reset to the default timeout value.

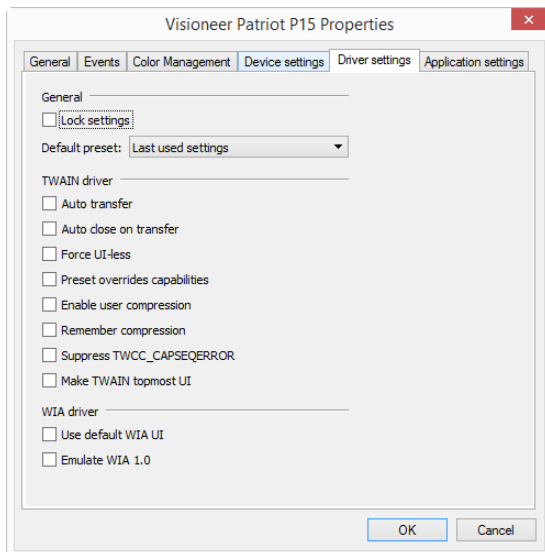
- **Power off**—input the number of minutes you want the scanner to wait before it turns itself off.

Click the green enter button to save any changes in the power off field.

Click the red reset button to reset to the default timeout value.

## Driver Settings

The options in this panel are for configuring how the TWAIN interface will behave in some scenarios. Please see the TWAIN scanning guide on the installation disc for instructions.

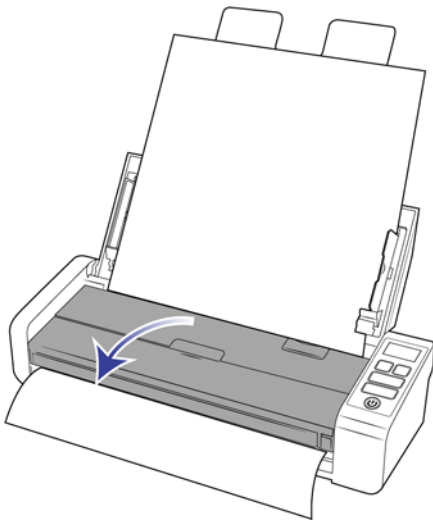


## CLEARING PAPER JAMS

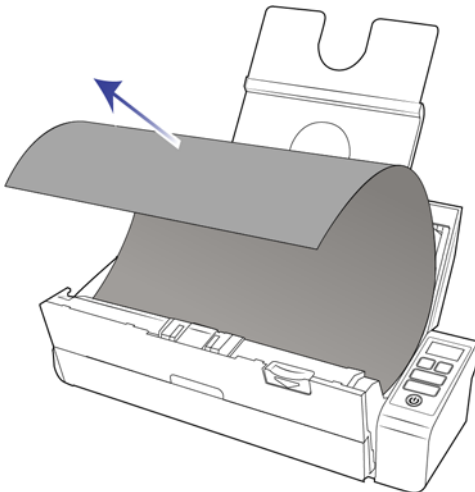
If your scanner stops scanning due to a paper jam in the Automatic Document Feeder, a warning opens after a few moments.

1. Ensure the front feed tray is closed and open the Automatic Document Feeder cover.

Do not attempt to remove a jammed page with the scanner closed.



2. Remove the jammed paper and close the cover.



To reduce the number of paper jams, smooth and straighten the paper before scanning, adjust the guides to the paper size, and insert the paper evenly into the ADF.

## CLEANING THE SCANNER

Regular maintenance of your scanner can help to ensure continual optimal performance.

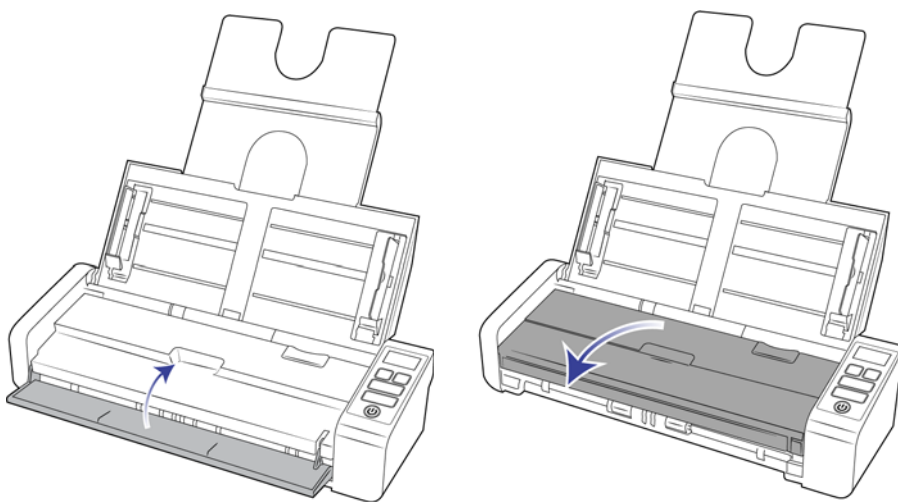
Using a soft, lint-free cloth, wipe down all plastic surfaces on the scanner.

## Cleaning Inside the Automatic Document Feeder

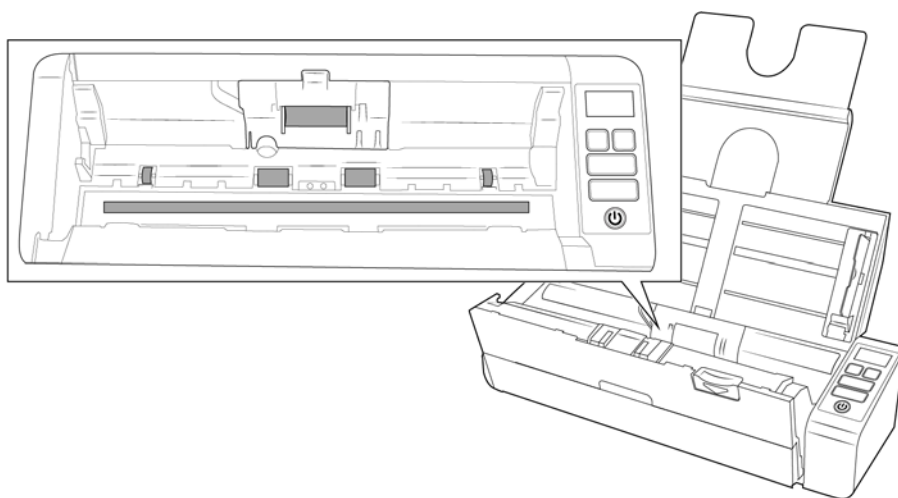
Cleaning the inside of the scanner helps to keep your scanner operating at optimum performance. You should clean the inside of the scanner at least once a week or after 1,000 pages have been scanned. If you are getting frequent paper jams, multiple pages feeding at the same time, or you're seeing lines in the scanned image, it is time to clean the scanner.

**Note:** Be careful when cleaning the rollers. All of the rollers, except the free rollers, are designed to rotate in one direction only. Do not force the roller to rotate in the opposite direction. Forcing the roller to rotate will damage it, and cause the scanner to feed pages incorrectly.

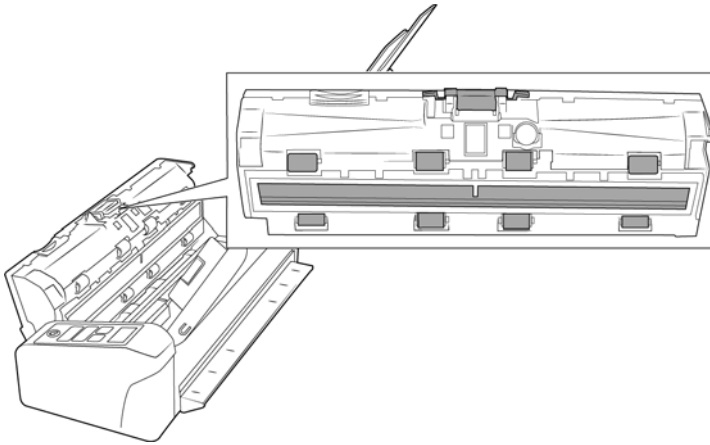
1. Wet a soft cloth with some Isopropyl rubbing alcohol (70%).
2. Ensure the front feed tray is closed and open the Automatic Document Feeder cover.



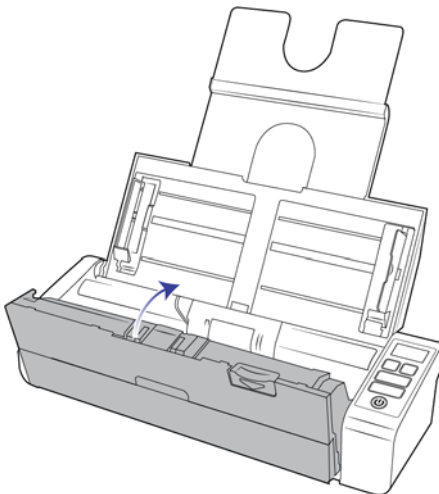
3. Wipe clean the rollers and glass in the scanner body. Rotate the rollers to clean the entire surface.



4. Wipe clean the rollers and glass in the underside of the ADF door. Rotate the rollers to clean the entire surface.



5. Close the scanner when you're finished.

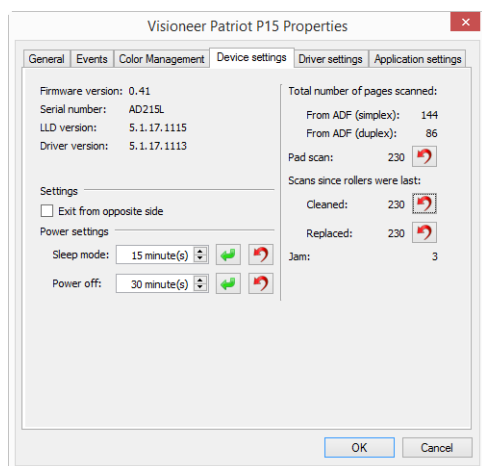




## REPLACING THE ADF PAD AND ROLLER(S)

The ADF pad and/or rollers will wear out and are designed to be user replaceable parts. Each section below indicates the expected scan life of the replaceable part.

After replacing a part as described in this section, reset the counter in the scanner properties page in the Windows Control Panel. On the **Device Settings** tab, click on the red reset button next the part counter that you replaced.



## Replacing the Separation Pad

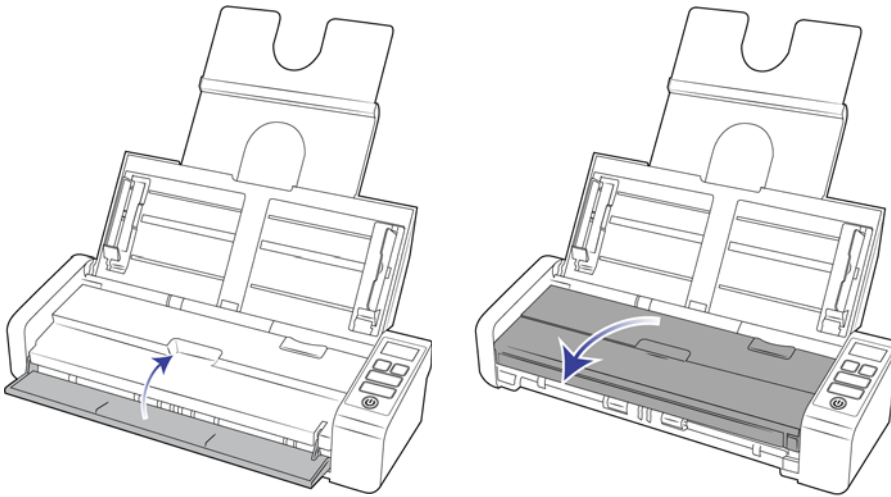
Problems with documents feeding into the ADF is an indication that the pad is wearing thin. The usage life of the ADF pad varies by what type of documents are generally scanned. Scanning large batches of heavily textured paper and embossed plastic cards will cause the ADF pad to wear faster. Large continuous batch scanning will also cause the ADF pad to wear faster. The ADF pad can be used to scan up to 10,000 pages.

Replacement parts can be purchased from the Parts & Accessories page for your scanner at [www.visioneer.com](http://www.visioneer.com).

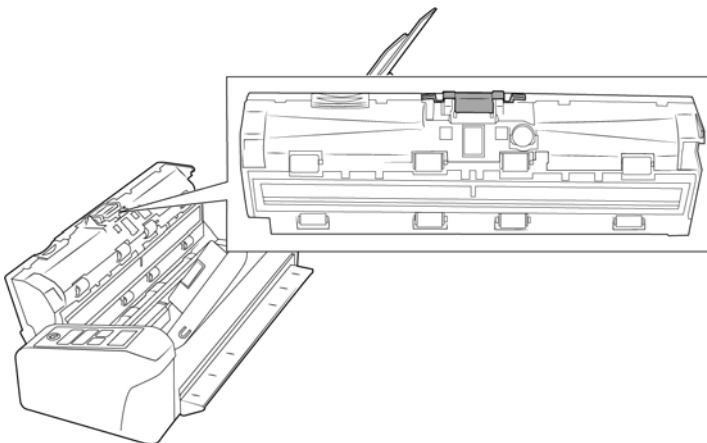


Discard the parts as you remove them from the scanner, the parts cannot be reused and are a choking hazard.

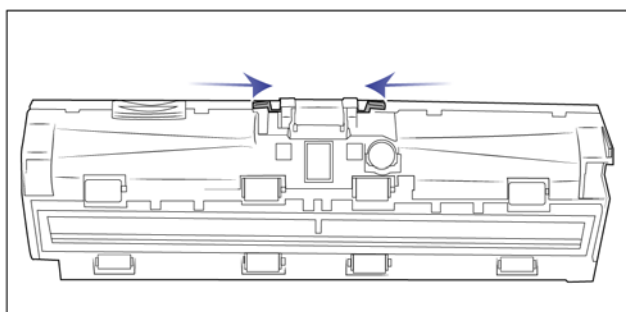
1. Ensure the front feed tray is closed and open the Automatic Document Feeder cover.



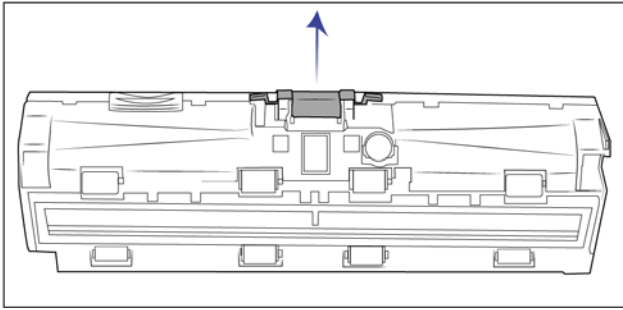
2. The ADF pad is located on the inside of the ADF door



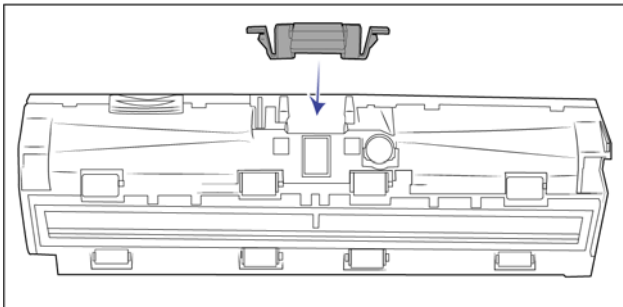
3. Squeeze the plastic clamp that holds the pad assembly in place.



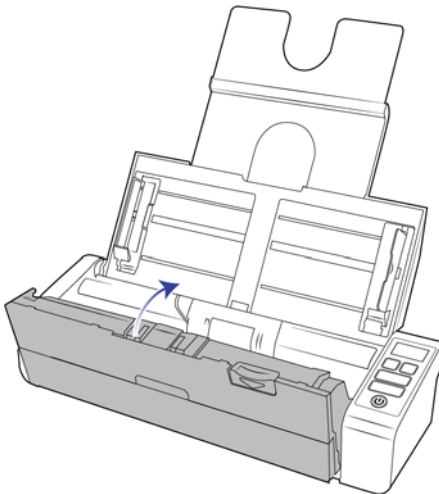
4. Lift the pad up and out of the scanner.



5. Place the new ADF pad in the scanner



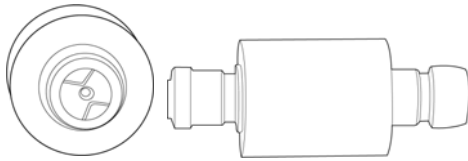
6. Press down on the ADF pad until you hear a "click" when it locks in place.
7. Close the scanner when you're finished.



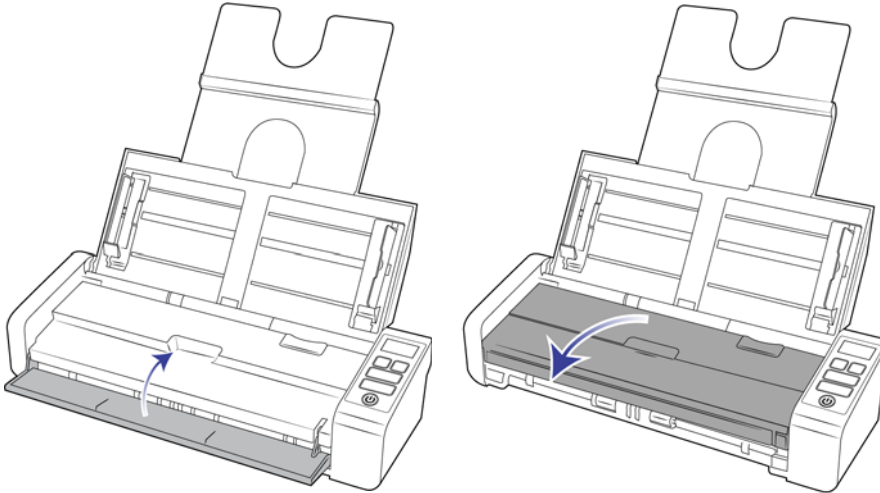
## Replacing the Feed Roller

The roller will wear out and is designed to be a user-replaceable part. A worn roller can cause documents to feed in skewed at an angle, or multiple pages to feed at the same time. Before replacing the roller you should clean it as excessive dust on the roller will make it appear worn and smooth. You cannot properly diagnose a worn roller until you have cleaned it. You should generally replace the roller every 100,000.

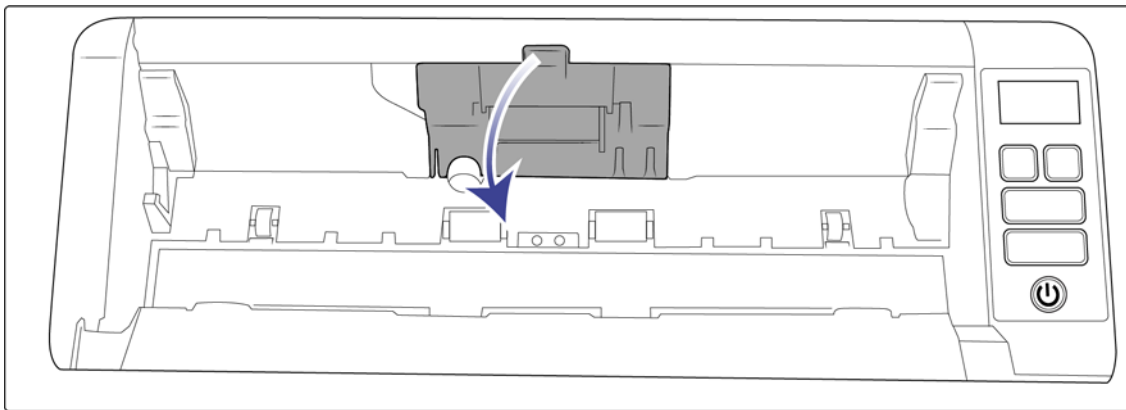
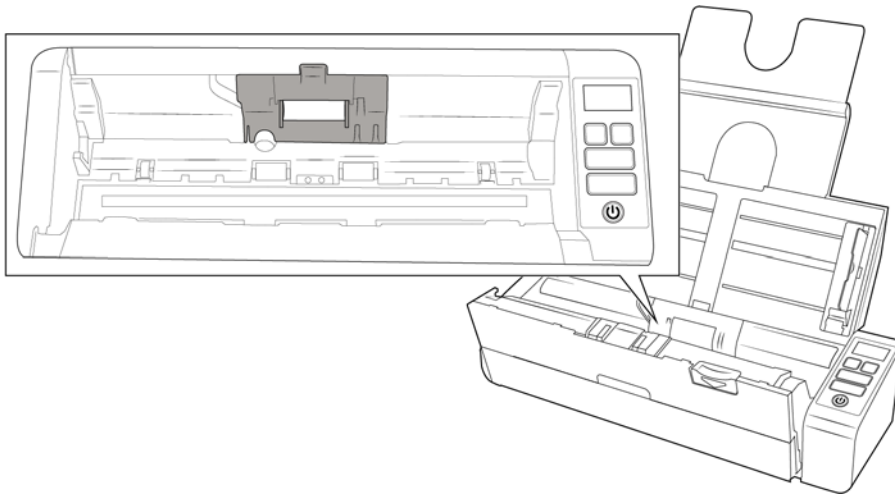
Replacement parts can be purchased from the Parts & Accessories page for your scanner at [www.visioneer.com](http://www.visioneer.com).



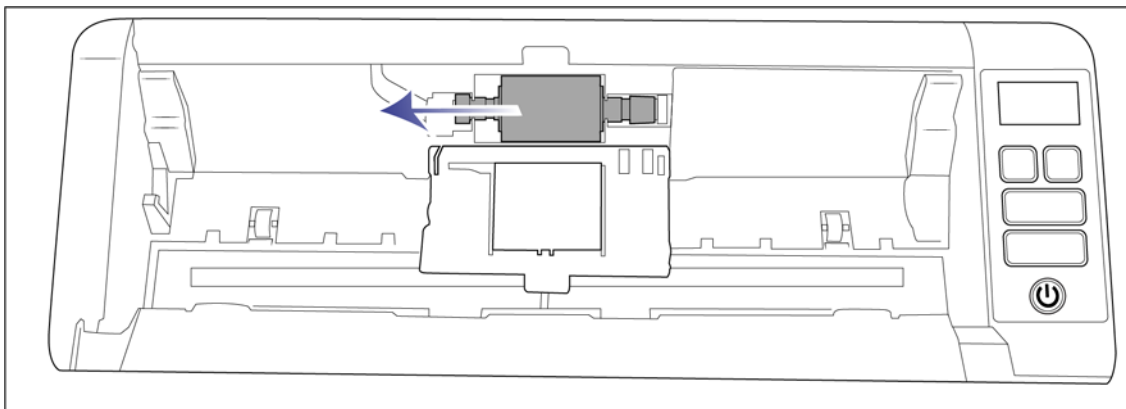
1. Ensure the front feed tray is closed and open the Automatic Document Feeder cover.



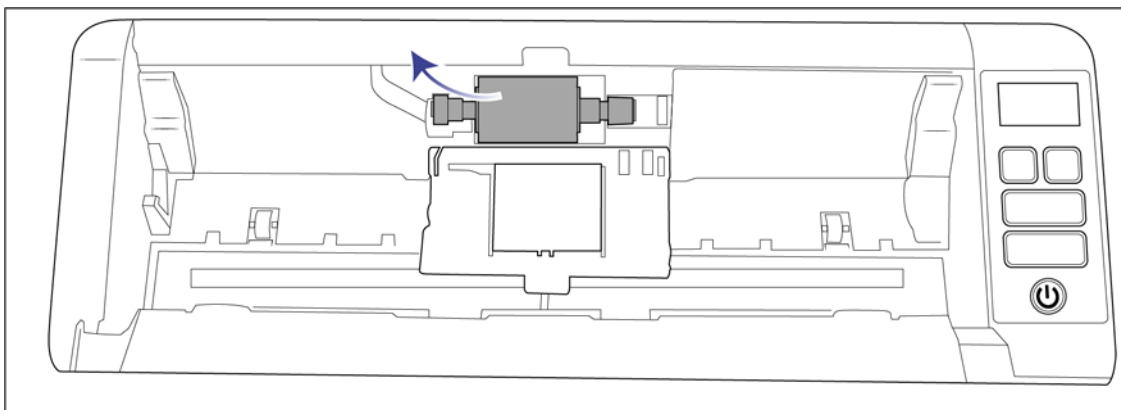
2. Locate and open the roller cover in the body of the scanner.



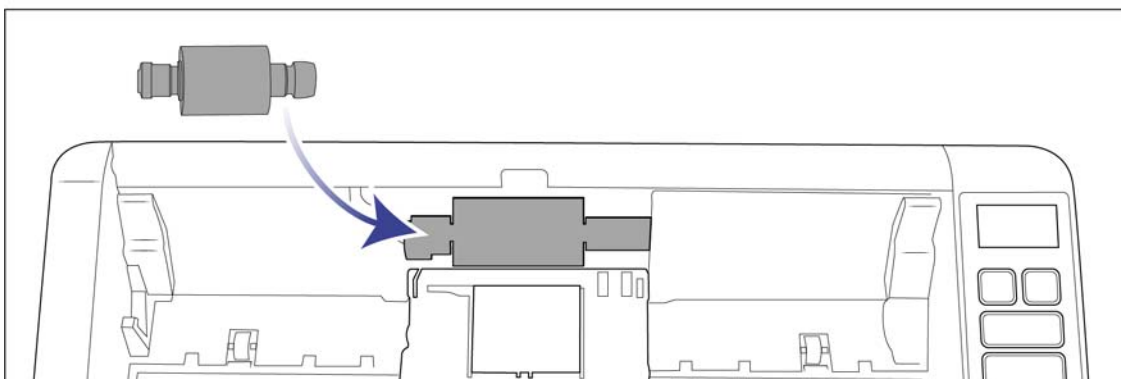
3. Slide the feed roller to the left.



4. Remove the feed roller.

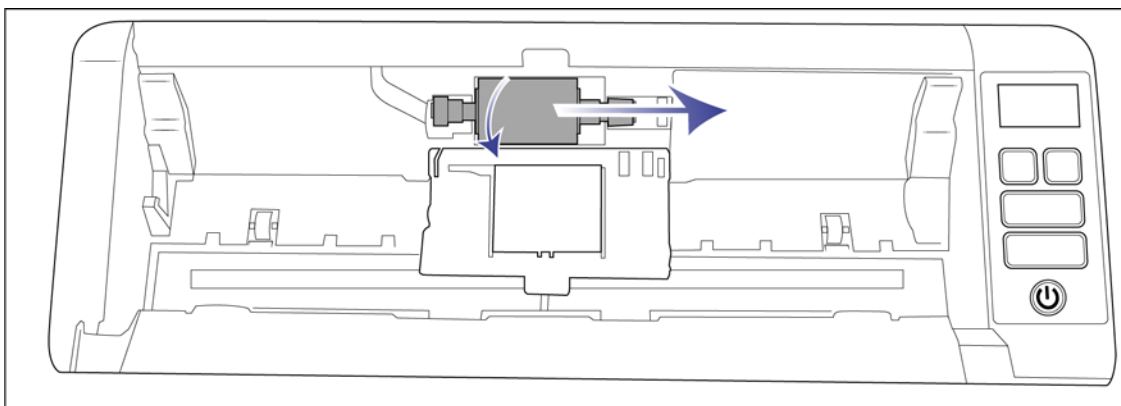


5. Take the new roller out of its packaging. Clean any dust off the roller before installing it.
6. Insert the left end of the new roller assembly into the hole in the roller channel. Angle the roller module into the roller channel.

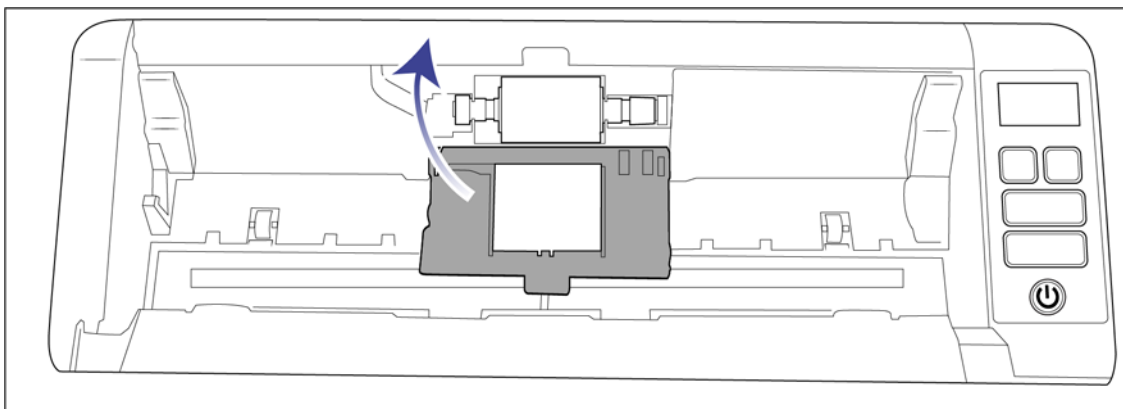


7. Slide the roller to the right.

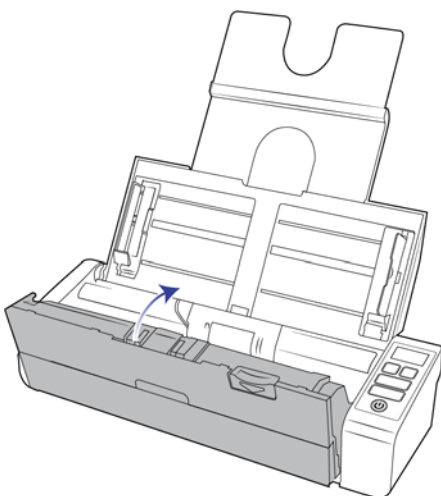
The roller will slide into place when it is aligned correctly. However, if it does not slide all the way into the housing, rotate the roller until it does.



8. Lift the roller cover and carefully push it closed to lock it in place. Make sure everything is aligned properly and the cover is fully closed. If the cover is not fully closed it will break during scanning and damage the scanner.



9. Close the scanner when you're finished.



## TROUBLESHOOTING

**Problem:** The scanner won't scan. What's wrong?

Check for one of these possible causes:

- **Are the cables loose or not plugged in securely?** Inspect the cable connections. Make sure the cables are plugged in securely.
- **Is the scanner's status light on?** Turn on the scanner's power. If the status light doesn't come on, plug the power supply into another electrical outlet. If you are using a UPS battery back-up or power strip, try plugging the scanner directly to a wall outlet.
- **Did you restart the computer and scanner?** If the scanner gets a paper jam, or loses connection because of an error, try restarting your computer and power cycling the scanner.

- **Did you plug the scanner into a USB hub?** If you're using a USB hub to connect the scanner try plugging the scanner's USB cable directly to the back of the computer. It is not recommended that you use the scanner with a USB hub, if you are using a hub, the hub must have its own power supply.
- **Is the USB cable 6' or less?** If you are using a USB cable that is longer than 6' you may lose connection to the scanner. The recommended USB cable length is 6' or less, the USB cable provided with your scanner is within this range.
- **Did you select another image source in the scanning software?** If you use multiple imaging devices with your computer, such as a camera, all-in-one printer, or another scanner, you may have selected another source for images. Make sure Visioneer® Patriot P15 is selected as the scanner.

**Problem:** Why does my scanner not function after performing a system restore on Windows?

The system restore process may have corrupted some of the driver components. It is recommended that you reinstall your scanner driver. Please refer to [Uninstalling Your Scanner](#) on page 58 for installation instructions.

**Problem:** Why won't my scanner buttons work after scanning with Windows Image Acquisition (WIA)?

After performing a scan using the WIA interface you must close the application you were using before scanning with the buttons on the scanner. This does not occur when scanning using the TWAIN or ISIS interface.

**Problem:** Why won't my scanner work after the computer has been sitting idle for several hours?

To resolve the problem, simply turn off the scanner power then turn it back on again.

This may occur after Windows goes into power saving mode to "hibernate" the computer into a low power state. When you move your mouse or type on the keyboard it "wakes" the computer back up and restores full power to the system. This power fluctuation during the computer's hibernating period may sometimes cause the scanner to lose communication to the computer.

**Problem:** The installation will not complete successfully. If installation finishes, the scanner's OneTouch options do not seem to work properly.

A likely cause is that some driver programs are already installed on your computer for another scanner. They may be interfering with the installation and OneTouch options, and you need to remove those other drivers and re-install your Visioneer® scanner. You can remove these programs from the Windows Control Panel. Please refer to the user manual provided with your other scanner hardware for instructions about removing the driver and software for that unit.

**Problem:** My computer keeps giving me out of hard drive space error messages.

The minimum requirement of free hard drive space is for the installation of the scanner driver and basic, low resolution, scanning. High resolution scans result in files that can be over 1 gigabyte in size. Free up some space on your hard drive for the software to be able to save the scanned images.

**Problem:** The paper jams the ADF.

To reduce the number of paper jams, smooth and straighten the paper before scanning, and adjust the guides to the paper size. Paper fed into the ADF at an angle can cause the feed mechanism to jam. If paper jams are occurring more frequently, try cleaning the roller with a soft cloth dampened with Isopropyl rubbing alcohol. Excessive dust on the roller can make it appear worn and will cause issues feeding paper. See [Cleaning Inside the Automatic Document Feeder](#) on page 47 for cleaning instructions.



**Problem:** The ADF won't feed pages properly.

A dirty or worn roller can cause documents to feed in skewed at an angle, or multiple pages to feed at the same time. First, try cleaning the rollers as described in [Cleaning Inside the Automatic Document Feeder](#) on page 47. If the problem persists, the separation and/or feed rollers may need to be replaced. Please see [Replacing the Separation Pad](#) on page 49 and [Replacing the Feed Roller](#) on page 51.

**Problem:** If the USB cable is disconnected during a scan, the scanner does not reconnect when the USB cable is plugged back in.

Unplug the power cable from the scanner, and then plug it back in.

If the scanner does not reconnect:

1. Unplug the power cable from the scanner.
2. Restart your computer.
3. After the restart is complete, plug the power cable back in.

## Error Light Troubleshooting Codes

### Normal Operation




- **Steady blue:** indicates the scanner is ready to scan.
- **Slow flashing blue:** indicates the scanner is in low power mode.
- **Rapid flashing blue:** indicates the scanner is waking up from low power mode.
- **Steady red:** the scanner is busy or it is not connected to the computer.
- **Flashing red:** the scanner is reporting an error.

### Error Codes

The status light indicates the current state of the scanner. If your scanner experiences hardware problems, the status light turns red and will flash a specific number of times, pause, and then repeat the same number of flashes. The number of flashes between pauses indicates the hardware error code. If an error occurs during scanning the LCD display will show a graphic indicating the error that has occurred.

Descriptions of the most common patterns are listed below. In all cases, you should turn off the scanner and check the scanner setup. Make sure the USB cable is plugged into the scanner and computer. Make sure the power cord is plugged into the scanner and into a wall outlet. Contact Xerox Technical Support if you experience a different blinking pattern.

Error code	LCD Graphic	Problem Description	Solution
Blank		Scanner is not connected to the computer	A cable may be loose. Check that the scanner's cables are correctly attached to the computer. If the scanner still does not connect, re-boot the computer.

Error code	LCD Graphic	Problem Description	Solution
4		Paper jam	Open the ADF cover and remove the jammed page. See <a href="#">Clearing Paper Jams</a> on page 46.
5		Multi feed	More than one page is in the scanner. Make sure that an item hasn't been inserted in the front of the scanner when trying to scan from the input tray.
6		The scanner's cover is open	The ADF door is not closed all the way. Open the scanner, make sure the paper guides are properly seated in the scanner and that the roller covers are fully closed, and then close the ADF again. Push down on the lid until it locks into place.
7, 8		The lamp in the scanner body or lid has malfunctioned	This usually occurs if the power was disconnected during a scan. Turn the scanner off, then back on again. If the problem persists, turn off the scanner, re-start the computer, then turn the scanner on. If the problem continues, and your scanner's power is plugged into a surge protector or UPS battery backup, try plugging the scanner power directly into a wall outlet.
All Other Codes		An internal part in the scanner may have malfunctioned	Turn off the power to your scanner, re-boot your computer, then turn it back on. If the problem persists, contact Xerox Technical Support.

## UNINSTALLING YOUR SCANNER

Use the options in the Windows Control Panel to remove the scanner driver and modules, and any other software provided with the scanner.

Please leave the scanner's USB cable plugged into the computer while uninstalling the scanner driver. Unplug the USB cable when directed to do so in the instructions below.

Open the list of installed programs in the Windows Control panel.

- Windows 7 and later: Open Programs and Features

### Uninstalling the scanner driver:

1. In the list of installed programs click on Visioneer® Patriot P15 driver.
2. Click the **Change/Remove** or **Uninstall** button.
3. Click **Yes** when asked to confirm that you want to remove the driver.

When the driver uninstallation is complete the progress window will automatically close.

4. Turn off the scanner and unplug the USB cable.

5. Reboot the computer if you are prompted to do so.

Follow these instructions to remove any of the other software you installed with your scanner. Depending on the software provided with your scanner, and which applications you installed during the scanner setup, the application list may include:

- OneTouch
- OneTouch ABBYY OCR module
- ABBYY FineReader
- ABBYY Business Card Reader
- Findo

### Uninstalling Visioneer Acuity™:

Visioneer Acuity is automatically installed when you install the scanner driver using the installation disc. You can also download the Visioneer Acuity module from the support pages for your scanner at [www.visioneer.com](http://www.visioneer.com). Visioneer Acuity is a utility with advanced image processing options to instantly improve the visual clarity of anything you scan.

1. In the list of installed programs select **Visioneer Acuity Assets**.
2. Click **Yes** when asked to confirm you want to remove the software.

Depending on the method of installation, and your scanner model, there may be multiple entries for Visioneer Acuity in the installed programs list. The additional entries in this list are the image processing libraries needed to support various scanner models. These additional items will be called "Visioneer Acuity Assets" followed by a version number. In the scenario described here, when you want to uninstall Visioneer Acuity make sure you select and uninstall Visioneer Acuity. If you uninstall one of the entries labeled as an "asset" you will still need to uninstall the main Visioneer Acuity utility.




## VISIONEER® PATRIOT P15 SPECIFICATIONS




Scanner Specifications	
Document Requirements	
Minimum Item Size	2.25 x 2 inches (57 x 51 mm)
Maximum Item Size	8.5 x 14 inches (216 x 356mm)
Capacity	20 pages of 20 lb printer paper (75–80 g/m <sup>2</sup> )
Paper Thickness	13–26 lbs. (50 –105 g/m <sup>2</sup> )
Plastic Card	Embossed cards up to 1.25 mm thick When scanning small pages such as Business Cards, we recommend using the front feed.

<b>Scanner Specifications</b>	
<b>General Specifications</b>	
ADF Scanning Speeds • A4 Page Size	When connected by USB Cable and USB-Power cable: • 8 pages per minute / 16 images per minute @ 200-300 dpi  When connected by USB Cable and AC-Power adapter: • 20 pages per minute / 40 images per minute @ 200 dpi • 15 pages per minute / 30 images per minute @ 300 dpi
Front Feed Scanning Speeds • A4 Page Size	When connected by USB Cable and USB-Power cable: • 8 seconds per page @ 200-300 dpi  When connected by USB Cable and AC-Power adapter: • 3 seconds per page @ 200 dpi • 4 seconds per page @ 300 dpi
Rear Feed Scanning Speeds • A4 Page Size	When connected by USB Cable and USB-Power cable: • 8 seconds per page @ 200-300 dpi  When connected by USB Cable and AC-Power adapter: • 3 seconds per page @ 200 dpi • 4 seconds per page @ 300 dpi
Optical Resolutions	200, 300, and 600 dpi
Interpolated Resolutions	75, 100, 150, 400, 500, and 1200 dpi (these resolutions are available when Visioneer Acuity is installed)
Internal Bit Depth	48-bit color, 16-bit grayscale, 1-bit bitonal (black & white)
Output Bit Depth	24-bit color, 8-bit grayscale, 1-bit bitonal (black & white)
Scan Method	Duplex Sheetfed
Image Sensor	CIS (Contact Image Sensor)
Light Source	RGB LED lamp
Interface	Hi-Speed USB 2.0, compatible with USB 1.1
Certifications	FCC Class B, WEEE, RoHS, ENERGY STAR, UL/C-UL, CB, CE, RCM, USB-IF, Mexico Energy (CFE)
Operating Temperature	40° ~ 95° F (5° ~ 35° C without condensation)
Relative Humidity	10% ~ 90% (@35° C without condensation)
<b>Scanner Dimensions (Trays Collapsed)</b>	
Width	11.69 inches (297 mm)
Depth	4.1 inches (104 mm)
Height	2.9 inches (74 mm)
Weight	3.3 pounds (1.5 kg)
<b>Scanner Dimensions (Trays Extended)</b>	
Width	11.69 inches (297 mm)
Depth	10 inches (254 mm)
Height	10 inches (255 mm)
Weight	3.3 pounds (1.5 kg)

Scanner Specifications	
Power Information	
Power Supply	APD (WA-36A24RCN-ACAA) DC Jack, 2P, 100~240Vac, 24Vdc, 1.5A, 36W, Class 1, ENERGY STAR, RoHS
Scanner Rating	24Vdc, 1.5A
Power consumption (AC Power Cord)	≤ 11.4 Watts (during operation) ≤ 6.34 Watts (ready) ≤ 2.6 Watts (power save after 15 minutes without scanning) ≤ 0.5 Watt (power off)
Power consumption (USB power cable)	≤ 5 Watts (during operation) ≤ 3.6 Watts (ready) ≤ 1.7 Watts (power save after 15 minutes without scanning) ≤ 0.1 Watt (power off)
Cable Information	
USB cable	1850 mm, 28AWG, with core, RoHS compliant
USB power cable	A Type, DC Jack, 4P, 1200 mm, 22AWG, RoHS compliant
Software Information	
Supported Operating Systems	Microsoft Windows –32-bit or 64-bit 7 (Service Pack 1) –32-bit or 64-bit 8 / 8.1 –32-bit or 64-bit 10
Scanner Drivers	TWAIN, WIA, ISIS
Bundled Software	Visioneer® OneTouch® Visioneer® Acuity Module ABBYY® FineReader® Sprint ABBYY® Business Card Reader® Findo®

## VISIONEER® PATRIOT P15 PARTS LIST

Part Name	Part Number	
Feed Roller	65-2521-000	
ADF Pad	57-0155-000	
Input feed tray	65-2566-000	

Part Name	Part Number	
USB Power Cable	35-0254-000	
USB Cable	35-0255-100	
Power Supply Power Plug Adapter	37-0100-000	

# APPENDIX A: COPY REGULATIONS

## UNITED STATES

Congress, by statute, has forbidden the reproduction of the following subjects under certain circumstances. Penalties of fine or imprisonment may be imposed on those guilty of making such reproductions.

- Obligations or Securities of the United States Government, such as:

Certificates of Indebtedness	National Bank Currency	Coupons from Bonds
Federal Reserve Bank Notes	Silver Certificates	Gold Certificates
United States Bonds	Treasury Notes	Federal Reserve Notes
Fractional Notes	Certificates of Deposit	Paper Money

Bonds and Obligations of certain agencies of the government, such as FHA, etc.

Bonds. (U.S. Savings Bonds may be photographed only for publicity purposes in connection with the campaign for the sale of such bonds.)

Internal Revenue Stamps. (If it is necessary to reproduce a legal document on which there is a canceled revenue stamp, this may be done provided the reproduction of the document is performed for lawful purposes.)

Postage Stamps, canceled or uncanceled. (For philatelic purposes, Postage Stamps may be photographed, provided the reproduction is in black and white and is less than 75% or more than 150% of the linear dimensions of the original.)

Postal Money Orders.

Bills, Checks, or Drafts of money drawn by or upon authorized officers of the United States.

Stamps and other representatives of value, of whatever denomination, which have been or may be issued under any Act of Congress.

- Adjusted Compensation Certificates for Veterans of the World Wars.
- Obligations or Securities of any Foreign Government, Bank, or Corporation.
- Copyrighted material, unless permission of the copyright owner has been obtained or the reproduction falls within the "fair use" or library reproduction rights provisions of the copyright law. Further information of these provisions may be obtained from the Copyright Office, Library of Congress, Washington, D.C. 20559. Ask for Circular R21.
- Certificates of Citizenship or Naturalization. (Foreign Naturalization Certificates may be photographed.)

- Passports. (Foreign Passports may be photographed.)
- Immigration Papers.
- Draft Registration Cards.
- Selective Service Induction Papers that bear any of the following Registrant's information:

Earnings or Income	Dependency Status	Court Record
Previous military service	Physical or mental condition	

Exception: U. S. Army and Navy discharge certificates may be photographed.

- Badges, Identification Cards, Passes, or Insignia carried by military personnel, or by members of the various Federal Departments, such as FBI, Treasury, etc. (unless photograph is ordered by the head of such department or bureau.)
- Reproducing the following is also prohibited in certain states: Automobile Licenses — Drivers' Licenses — Automobile Certificates of Title.

The above list is not all inclusive, and no liability is assumed for its completeness or accuracy. In case of doubt, consult your attorney.

## CANADA

Parliament, by statute, has forbidden the reproduction of the following subjects under certain circumstances. Penalties of fines or imprisonment may be imposed on those guilty of making such copies.

- Current bank notes or current paper money.
- Obligations or securities of a government or bank.
- Exchequer bill paper or revenue paper.
- The public seal of Canada or of a province, or the seal of a public body or authority in Canada, or of a court of law.
- Proclamations, orders, regulations or appointments, or notices thereof (with intent to falsely cause same to purport to have been printed by the Queen's Printer for Canada, or the equivalent printer for a province).
- Marks, brands, seals, wrappers or designs used by or on behalf of the Government of Canada or of a province, the government of a state other than Canada or a department, board, Commission or agency established by the Government of Canada or of a province or of a government of a state other than Canada.
- Impressed or adhesive stamps used for the purpose of revenue by the Government of Canada or of a province or by the government of a state other than Canada.
- Documents, registers or records kept by public officials charged with the duty of making or issuing certified copies thereof, where the reproduction falsely purports to be a certified copy thereof.
- Copyrighted material or trademarks of any manner or kind without the consent of the copyright or trademark owner.

The above list is provided for your convenience and assistance, but it is not all inclusive, and no liability is assumed for its completeness or accuracy. In case of doubt, consult your solicitor.



## OTHER COUNTRIES

Copying certain documents may be illegal in your country. Penalties of fine or imprisonment may be imposed on those found guilty of making such reproductions.

- Currency notes
- Bank notes and cheques
- Bank and government bonds and securities
- Passports and identification cards
- Copyright material or trademarks without the consent of the owner
- Postage stamps and other negotiable instruments

**Note:** this list is not inclusive and no liability is assumed for either its completeness or accuracy. In case of doubt, contact your legal counsel.



